



TRAINING

OPERATORS PRONEWS
ASSET MANAGEMENT
PACKAGE 16.6 – 20.1

JUNE 2021



TABLE OF CONTENTS

1.	INTRODUCTION.....	2
2.	IPDIRECTOR 7.92	3
2.1.	PUBLISH Add-On 2.2	3
2.2.	ABRoll Updates	3
2.3.	Ingest Scheduler Improvements	4
2.4.	Bin Management Updates	5
2.5.	Playlist Management Updates	5
2.6.	Nearline Management Updates	6
2.7.	IPEdit – Software Player Integration	6
3.	IPWEB 2.10.....	7
3.1.	Bin management	7
3.2.	Clips Management	7
4.	SOFTWARE DOWNLOADS AND MANUALS	8

1. INTRODUCTION

The latest version of IPDirector introduces a number of key features and improvements:

- > Publish Add-On 2.2
- > IPEdit – Software Player integration
- > Ingest Scheduler
- > Bin Management
- > Playlist Management
- > Nearline Management
- > ABRoll

The latest version of IPWeb also introduces a number of functionality improvements:

- > Operational and ergonomic improvements
 - > Bin Management
 - > Clips Management

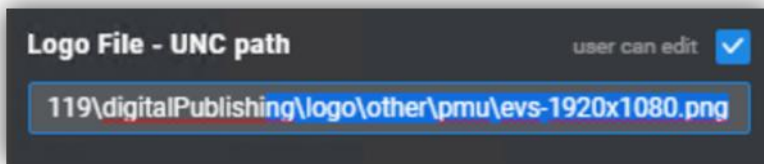
2. IPDIRECTOR 7.92



2.1. PUBLISH ADD-ON 2.2

> Additional Formats supported for Logos

Logo configuration is simplified, thanks to support for additional image formats. When creating a Workflow Target in PUBLISH Add-On a Logo File can be added and will burn the logo onto the published media. With the update to version 2.2 you can now add .KM files (EVS format) as well as .TIFF, .PNG and .TGA file formats.



NOTE: This feature requires VIA Xsquare 4.2 (or higher).

2.2. ABROLL UPDATES

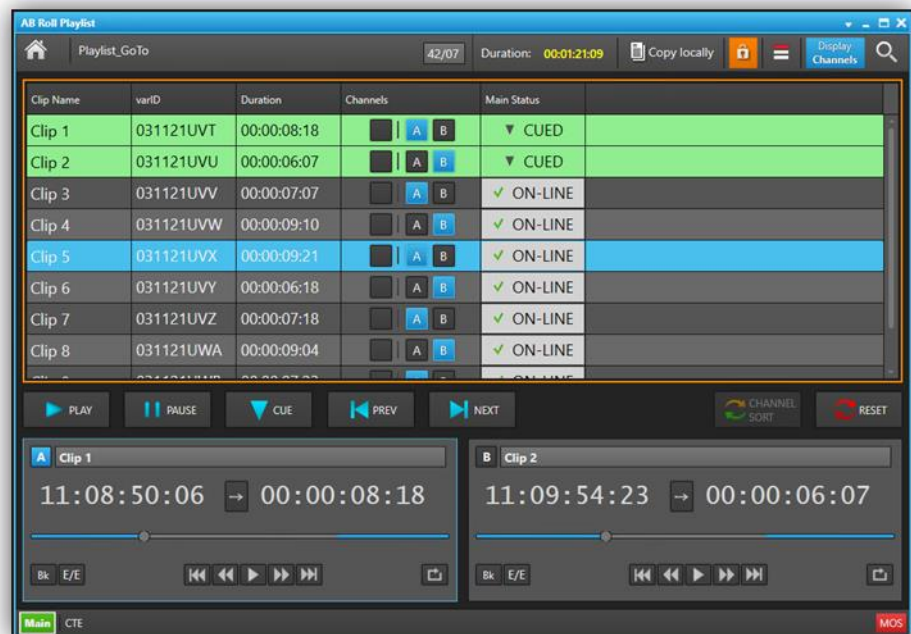
> GoTo ASAP

Playout workflows are now accelerated thanks to the GoTo ASAP function that's been added to ABRoll Playlist.

Simply select the element in your playlist you want to go to and hit "Shift + Ctrl + C" to Cue the selected element. By hitting "Shift + Ctrl + P" you will launch a Play command on the selected element in your ABRoll Playlist.

To further facilitate this workflow, we've introduced extra navigation possibilities by using the Up and Down arrows on your keyboard.

NOTE: The Shortcuts are not configurable and when the selected element is the last played element a GoTo ASAP is not possible (You will need to Cue it first before it can be played again).



> **Better Visibility on Assigned Channel**

Playout monitoring in the ABRoll Playlist is enhanced with the addition of a new column available called: “Assigned Channel”. Access the “Organize Column” from the contextual menu by hitting right click on your mouse when pointing at the column’s header. With the “Assigned Channel” Column visible it’s now much clearer to operators which channel is assigned. The background and foreground colours can be modified in the Playlist Settings (accessible from the Tools Menu).

Loop	Clip Name	varID	Duration	Assigned Channel	Channels	Main Status
	Clip01	050621YEB	00:00:04:00	A	<input type="checkbox"/> A <input type="checkbox"/> B	▼ CUED
	Clip02	050621YEC	00:00:04:00	B	<input type="checkbox"/> A <input type="checkbox"/> B	▼ CUED
G2 (on-air duration: 00:00:20:15)						
	Clip03	050621YED	00:00:04:00	A	<input type="checkbox"/> A <input type="checkbox"/> B	✓ ON-LINE
	Clip04	050621YEE	00:00:04:00	B	<input type="checkbox"/> A <input type="checkbox"/> B	✓ ON-LINE
	Clip08	050621YEF	00:00:04:00	B	<input type="checkbox"/> A <input type="checkbox"/> B	✓ ON-LINE

> **Restore Progress Indication**

ABRoll Playlist functionality has been further improved with clearer visibility on status of clip restore operations. In the “Main Status” Column you can now monitor the progress of your restore – as a percentage - giving you a better overview of the restore process.

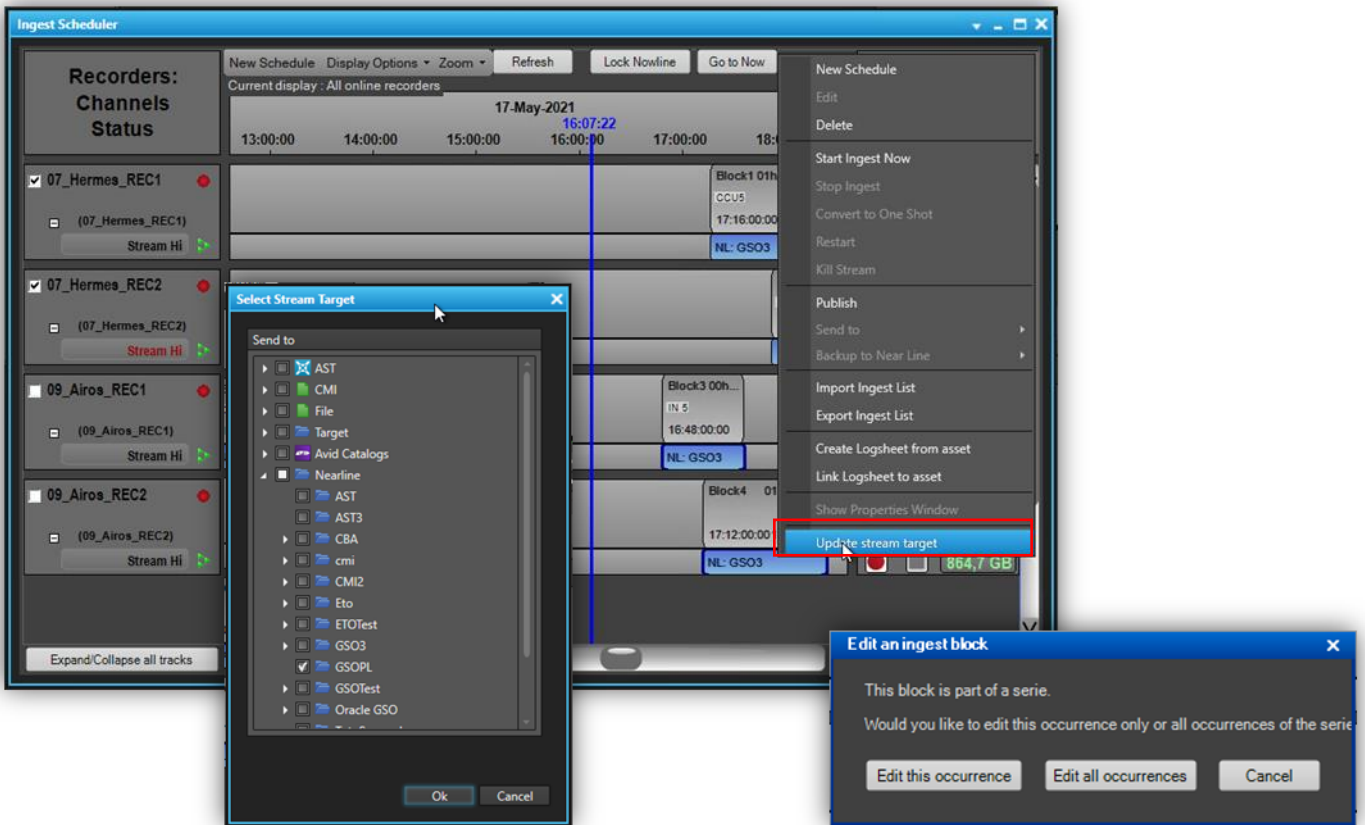
Clip Name	varID	Duration	Channels	Main Status
ipd05-13_XT13_REC1-0066	pmu-20210...	00:00:15:00	<input type="checkbox"/> A <input type="checkbox"/> B <input type="checkbox"/> C <input type="checkbox"/> D	▼ CUED
ipd05-13_XT13_REC1-0067	pmu-20210...	00:00:15:00	<input type="checkbox"/> A <input type="checkbox"/> B <input type="checkbox"/> C <input type="checkbox"/> D	▼ CUED
ipd05-13_XT13_REC1-0068	pmu-20210...	00:00:15:00	<input type="checkbox"/> A <input type="checkbox"/> B <input type="checkbox"/> C <input type="checkbox"/> D	▼ CUED
ipd05-13_XT13_REC1-0073	pmu-20210...	00:00:15:00	<input type="checkbox"/> A <input type="checkbox"/> B <input type="checkbox"/> C <input type="checkbox"/> D	✓ ON-LINE
ipd05-13_XT13_REC1-0069	pmu-20210...	00:00:15:00	<input type="checkbox"/> A <input type="checkbox"/> B <input type="checkbox"/> C <input type="checkbox"/> D	▼ CUED
ipd05-13_XT13_REC1-0070	pmu-20210...	00:00:15:00	<input type="checkbox"/> A <input type="checkbox"/> B <input type="checkbox"/> C <input type="checkbox"/> D	27 %
ipd05-13_XT13_REC1-0071	pmu-20210...	00:00:15:00	<input type="checkbox"/> A <input type="checkbox"/> B <input type="checkbox"/> C <input type="checkbox"/> D	✓ ON-LINE
ipd05-13_XT13_REC1-0072	pmu-20210...	00:00:15:00	<input type="checkbox"/> A <input type="checkbox"/> B <input type="checkbox"/> C <input type="checkbox"/> D	✓ ON-LINE

2.3. INGEST SCHEDULER IMPROVEMENTS

> **Change Stream Target for Multiple Blocks at once**

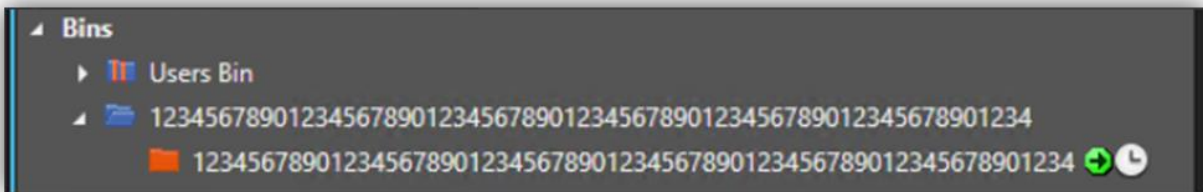
In Ingest Scheduler, you have now the ability to update the Stream Targets of multiple ingest blocks at once. Select all the Stream Targets you want to modify by holding the “Ctrl” button and click on the different Stream Targets in your Ingest Scheduler. Next you click right on your mouse (on one of the selected Stream Targets) to open the Contextual Menu. From this menu you can select “Update Stream Target”. A Select Stream Target window will open allowing you to update your Stream Target for all selected Streams.

This function also works for Repeat and Repeat Every occurrence. You will only be able to edit one single occurrence or edit all occurrences.



2.4. BIN MANAGEMENT UPDATES

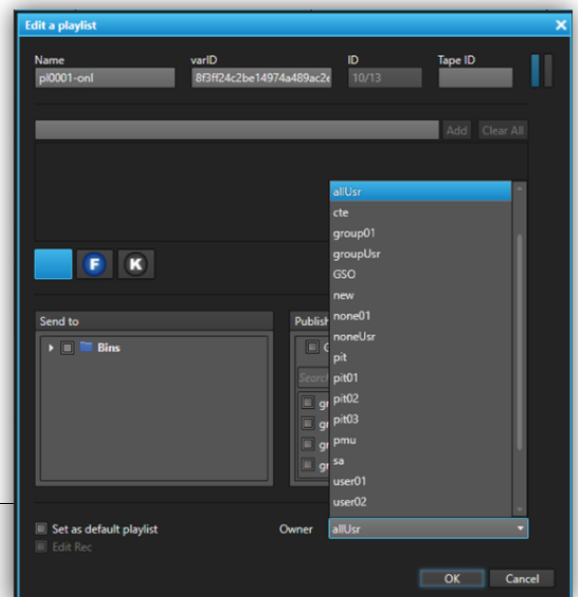
You can now manage your bins even more conveniently, with the new ability to name your Bin and Bin Directory with titles of up to 64 characters.



2.5. PLAYLIST MANAGEMENT UPDATES

> Change Owner

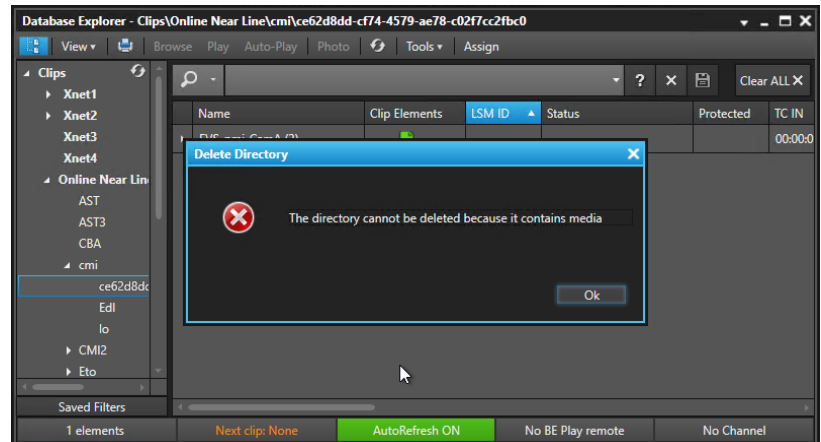
From the Database Explorer and from the Playlist Panel you now can change the owner of a Playlist. Select from the Contextual Menu "Edit/Rename" to open an Edit Playlist Window. In the bottom left corner you can modify the Owner if needed.



2.6. NEARLINE MANAGEMENT UPDATES

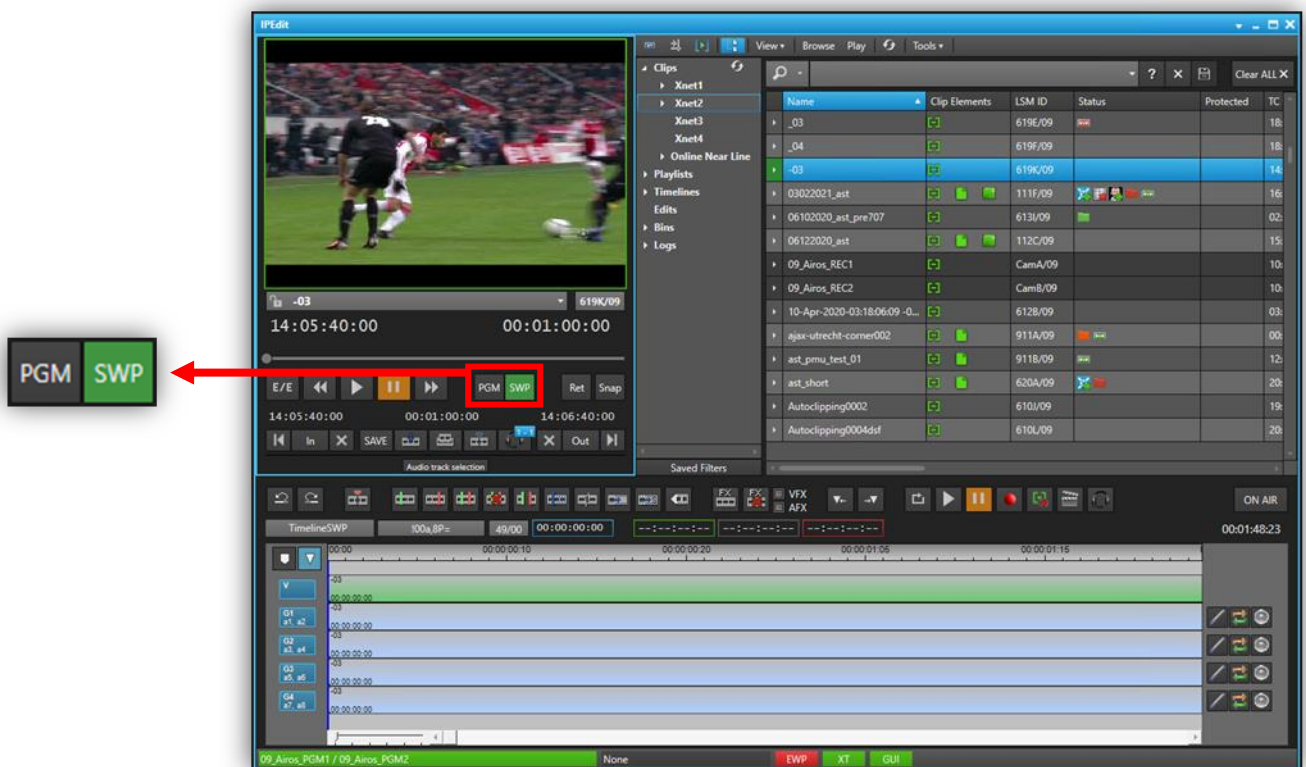
> Directory Deletion Secured

A new security layer has been added in the latest IPDirector update to prevent the deletion of united media from your Nearline Storage. You are now unable to delete a Directory on the Nearline if it contains media. If you want to delete the Directory you need to first delete the media within the Directory before you can delete the Directory on your Nearline Storage.



2.7. IPEDIT – SOFTWARE PLAYER INTEGRATION

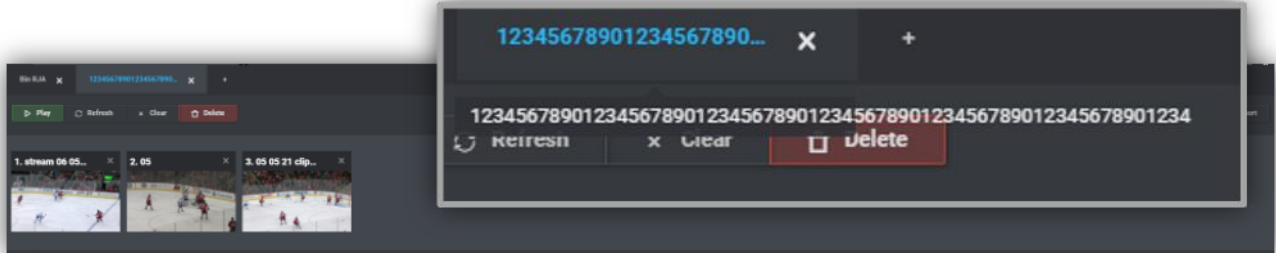
As previously mentioned in Operators ProNews, we've noticed a decrease in IPDirector Hardware AVH Component availability. This has a direct impact on IPedit Operations as the AVH Card is used to show the video in the Preview Player of IPedit. We've therefore introduced a Software Player Mode to the IPedit Preview Player. By clicking on the "SWP" button the Software Player will be activated in the Preview Player. If you wish to use the video coming from the AVH Card, simply select the "PGM" button in the Preview Player. All actions to edit your timeline, that you were previously familiar with, are now available on the clip loaded in the Software Player.



3. IPWEB 2.10

3.1. BIN MANAGEMENT

As in IPDirector you are now able to have up to 64 characters in your Bin and Directory Bin names.



3.2. CLIPS MANAGEMENT

When loading a ganged clip into your Video Player you have now the option to easily switch from an angle to another angle.

Click on the Clip name zone to the left of the transport buttons in the Video Player and a List Menu will open showing you all ganged clips. Select the desired clip from the list and your media will instantly be loaded into the player.





4. SOFTWARE DOWNLOADS AND MANUALS

Please refer to the [Support Page of the EVS Website](#) and the Download area for manuals, release notes and software packages to download.

If you don't already have an EVS login, you'll be invited to create a personal EVS account, to help ensure that you're kept up to date with only the most relevant information and updates. This will also allow you to download all the information you need, completely free of charge.