



TRAINING

OPERATORS PRONEWS
INFRASTRUCTURE
PACKAGE 16.6 – 20.1
JUNE 2021

TABLE OF CONTENTS

1.	INTRODUCTION.....	2
2.	NEW FEATURES IN VIA XSQUARE 4.3.....	2
2.1.	VIA XSquare UI application	2
2.2.	Supermotion mode (SLSM)	3
2.3.	New cluster type "by target"	3
2.4.	Premium license for SDR-HDR & HDR-HDR dynamic conversion	3
2.5.	Accessing BBC 3D LUT	3
2.6.	Restore Fill & Key ProRes 4444 on the server	3
2.7.	Half-framerate conversion without transcoding.	3
2.8.	XDCAM MXF AS-10 Format	4
2.9.	Qualitative deinterlacer filter	4
2.10.	Other features	4
3.	COMPATIBILITY.....	4
4.	SOFTWARE DOWNLOADS AND MANUALS.....	4

1. INTRODUCTION

From version 4.1 onwards, VIA Xsquare offers SDR/HDR mixed workflow using SDR/HDR and HDR/HDR dynamic conversion, and the possibility to restore Fill&Key from ProRes 4444 to XT/XS server. A new operational functionality allows you to configure VIA Xsquare cluster using the new type “by target”. The VIA Xsquare 4.2 introduces a new UI application, replacing the browser. New encoding features appear as well: keeping transcoded SLSM clips, use of static SDR/HDR conversion LUT and frame rate downsampling, Finally, the latest update, version 4.3 introduces the new AS-10 encoder profile, and a better deinterlacing process



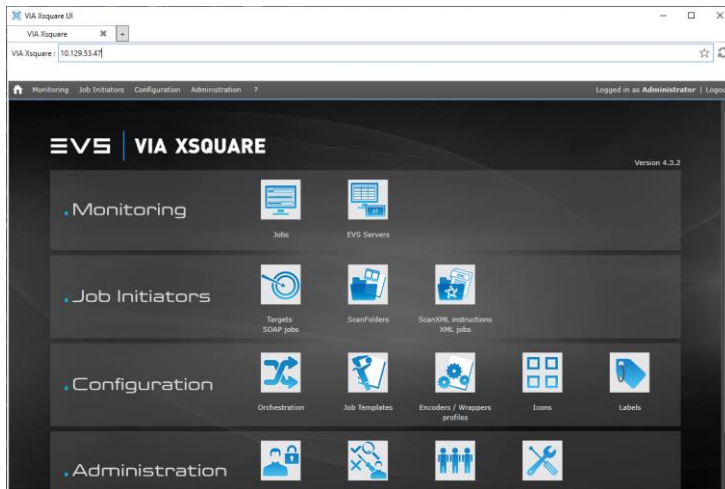
2. NEW FEATURES IN VIA XSQUARE 4.3

(Note: the features listed here include those introduced in versions 4.1 and 4.2)



2.1. VIA XSQUARE UI APPLICATION

As Silverlight is no longer supported by Microsoft, we've introduced a new app to replace the browser. VIA Xsquare UI is a Windows application, that allows you to access the user interface without having to use Internet Explorer.



2.2. SUPERMOTION MODE (SLSM)

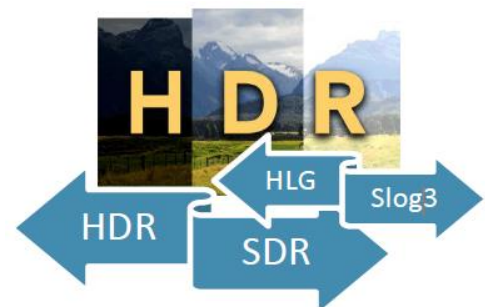
It's now possible to keep real SLSM clips when transcoding from/to native XT/XS server codecs (DNxHD, DNxHR, ProRes, AVC-I, XAVC), for backup or restore. For EVS MXF file destination, a SuperMotion mode is available in the advanced parameters of the template destination

2.3. NEW CLUSTER TYPE "BY TARGET"

Multiple XTAccess agents can be grouped in a cluster of engines, dedicated to a specific job types. A new type (defined in the Orchestration Window) enables you to dedicate the cluster to a specific Target.

2.4. PREMIUM LICENSE FOR SDR-HDR & HDR-HDR DYNAMIC CONVERSION

Adaptive HDR/SDR Cross Converter allows to add SDR-HDR, HDR-HDR, and HDR-SDR conversions in both HD and UHD in any XTAccess workflow. Based on an intelligent algorithm, this converter guarantees an optimal conversion, regardless of the video content. The parameters dedicated to the Adaptive HDR/SDR Conversions have to be configured at the VIA XSquare Encoder Profile level.



2.5. ACCESSING BBC 3D LUT

For users who don't want a dynamic SDR-HDR & HDR-HDR conversion, it's now possible to carry out the conversion using a static BBC LUT (Hybrid Log-Gamma - HLG- curve).

2.6. RESTORE FILL & KEY PRORES 4444 ON THE SERVER

XTAccess 4.1 introduces support for media encoded in the *ProRes 4444* family (with an alpha channel) for restore operations as "fill and key" media on an XT/XS server.

2.7. HALF-FRAME RATE CONVERSION WITHOUT TRANSCODING.

Changing from 50p to 25p (or 59.94p to 29.97p) usually requires time-consuming transcoding. It's now possible to use the video setting "Half rate" to do the job without having to transcode (only for DNxHD on OP1A or OPAtom)

2.8. XDCAM MXF AS-10 FORMAT

A new encoder profile, compliant with the MXF Application Specification AS-10 (Archive and Preservation), has been added for Sony XDCAM codecs

XDCAM HD 422 50 MXF OP1A (AS-10 PAD)

EVSHDVEncoder.dll

2.9. QUALITATIVE DEINTERLACER FILTER

A better-quality filter for conversion from interlaced to progressive filter has been introduced.



2.10. OTHER FEATURE UPDATES

- The logo insertion EDL effect can now use common picture formats: JPEG, TIFF, TGA or PNG
- Update clip name of a running job to Avid
- For IPD-VIA Import workflow, a TC Offset can be applied (e.g. to adapt timezone)
- VIA Licensing stand-alone installer: reduces upgrade time
- Support for scanfolder on XStore PBM

3. COMPATIBILITY

- XTAccess and VIA Xsquare need to have the same release version
- VIA XSquare 4.x is backwards compatible with previous generations of products
 - Note: XSquare 3.x is not forwards compatible with the new generation of products
- VIA XSquare 4.3 is compatible with IPDirector 7.20 to 7.92 and Multicam 15.03 to 20.01
- VIA XSquare 4.3 is compatible with the following 3rd party products:
 - Avid Interplay Production 3.6 - 3.8
 - Avid MediaCentral 2017.2, 2018.6, 2018.11, 2019.6, 2020.4 & 2021.3
 - Avid Media Composer 8.4.5 - 8.8, 2018.6 - 2018.12, 2019.9
 - Adobe Premiere Pro CC 2015 13.1, 14.0, 14.2, 15.0, 15.1 & 15.3
 - Apple Final Cut Pro 7.03, Final Cut Pro X 10.02

4. SOFTWARE DOWNLOADS AND MANUALS

Please refer to the [Support Page of the EVS Website](#) and the Download area for manuals, release notes and software packages to download.

If you don't already have an EVS login, you'll be invited to create a personal EVS account, to help ensure that you're kept up to date with only the most relevant information and updates. This will also allow you to download all the information you need, completely free of charge.