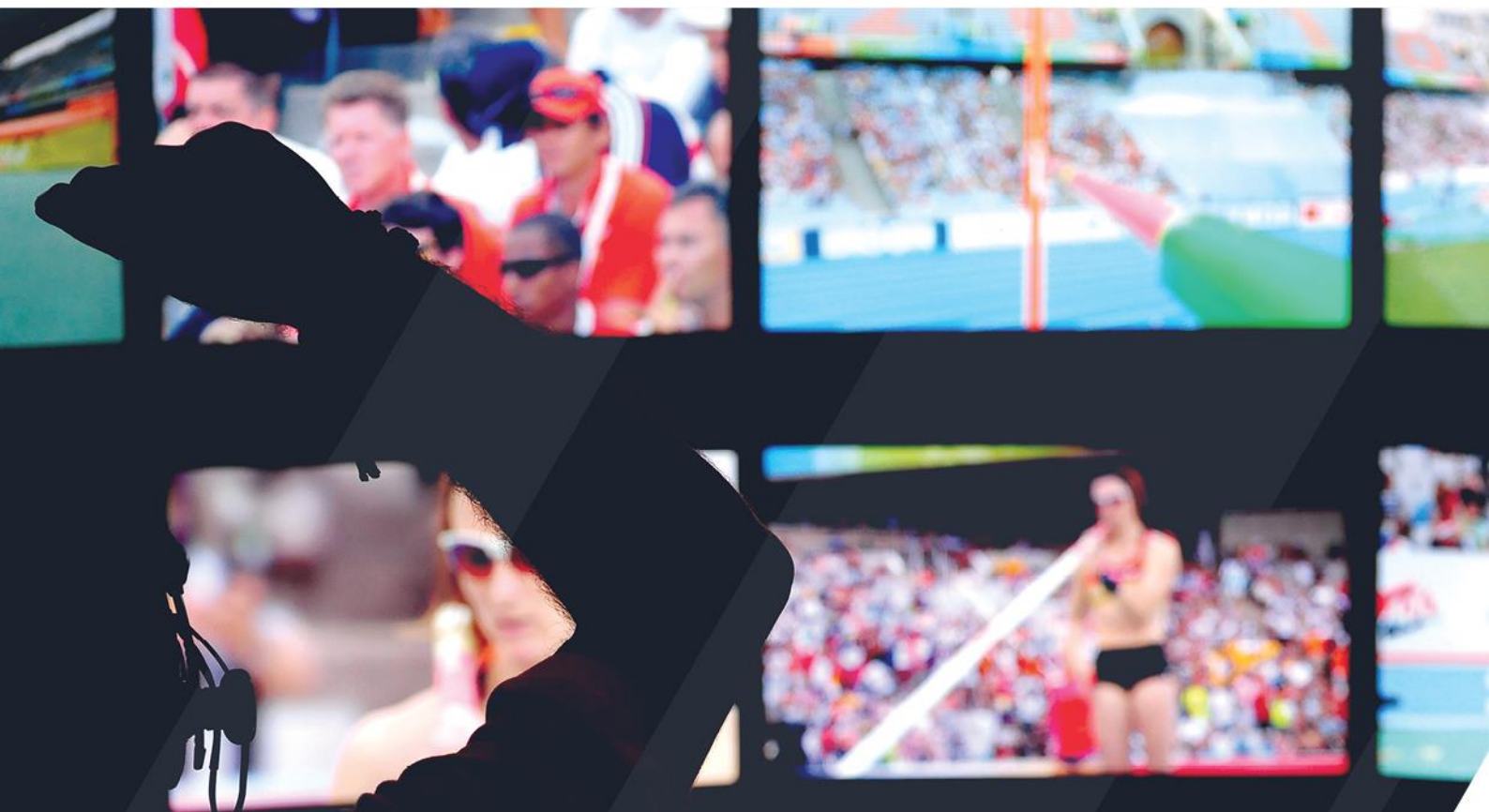


Operators' ProNews

EVS Asset Management

Package 20.2 | March 2022



Corporate

+32 4 361 7000

North & Latin America

+1 973 575 7811

Asia & Pacific

+852 2914 2501

Other regional offices

[evs.com/contact/offices](https://www.evs.com/contact/offices)

→ [evs.com](https://www.evs.com)

Contents

1	INTRODUCTION.....	3
1.1	IPDirector 8.0	3
1.2	IPWeb 2.11	3
2	IPDIRECTOR	4
2.1	New Features.....	4
3	IPWEB.....	8
3.1	New Features.....	8
3.2	Improvements	8
4	SOFTWARE DOWNLOADS & MANUALS	9

1. Introduction

In this newsletter, we're proud to introduce a major upgrade to IPDirector which has made it truly fit for the future. This new release forms part of the MediaCeption Solution, a complete production asset management package for fast and easy content turnaround.

Alongside these developments, there are also new features and improvements for IPWeb.

1.1 IPDirector 8.0

This major upgrade introduces some major new features. Later this year it will also benefit from the integration of IPD-VIA Apps.

New Features

- Reskin
- Integration of IPD-VIA Apps
- Plugin Management
- Layout Management
- Archive Add-On 1.2
- Publish Add-On 2.3

1.2 IPWeb 2.11

This version incorporates some new features as well as functionality improvements.

New Features

- Publish Add-On 2.3

Improvements

- Grab Image
- Playout growing clips

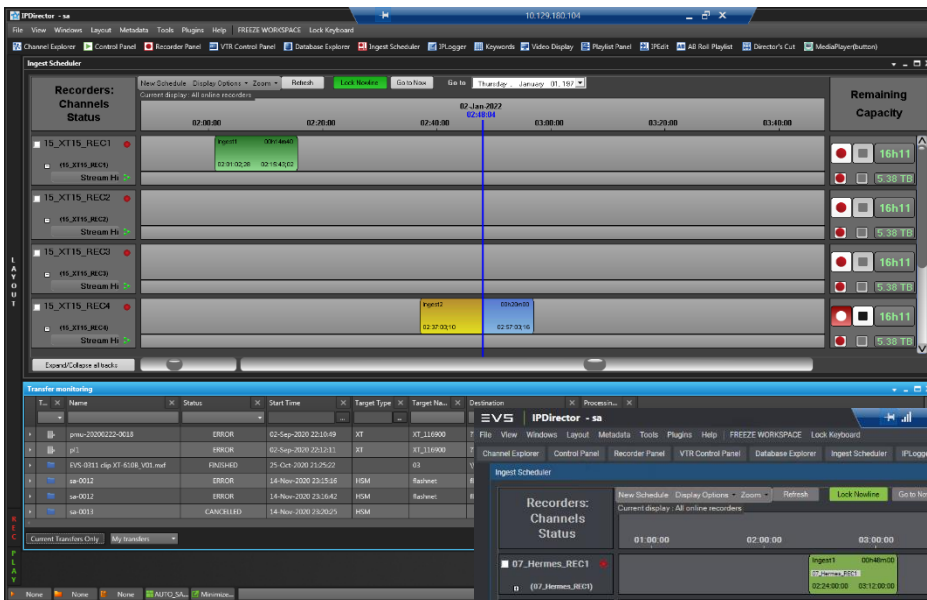
2. IPDirector

The IPDirector content management suite features dynamic applications for live media content browsing, control, edit and playout, relying on a central database. With its open, modular architecture, IPDirector can be adapted to any production environment and allows for easy integration and media exchange with any third-party system. Each interface is easy-to-use, guaranteeing fast and efficient content turnaround.

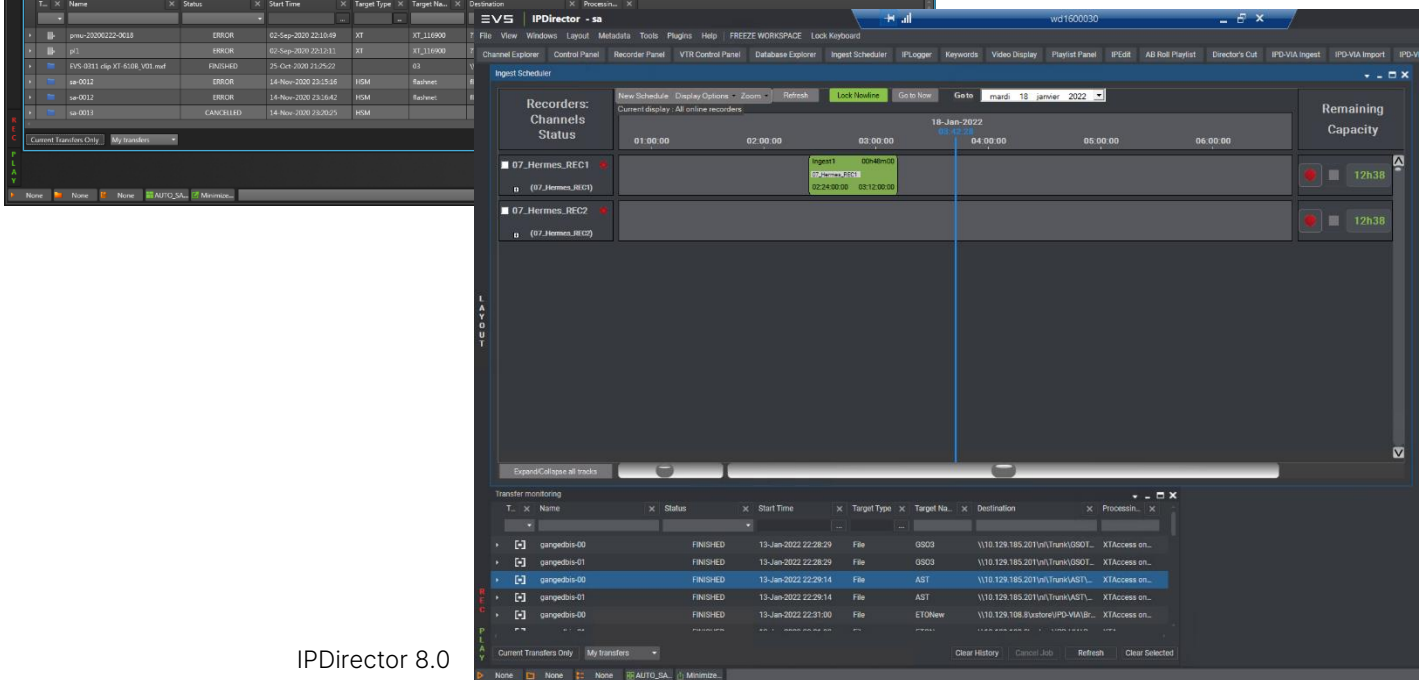
2.1 New Features

2.1.1 Reskin

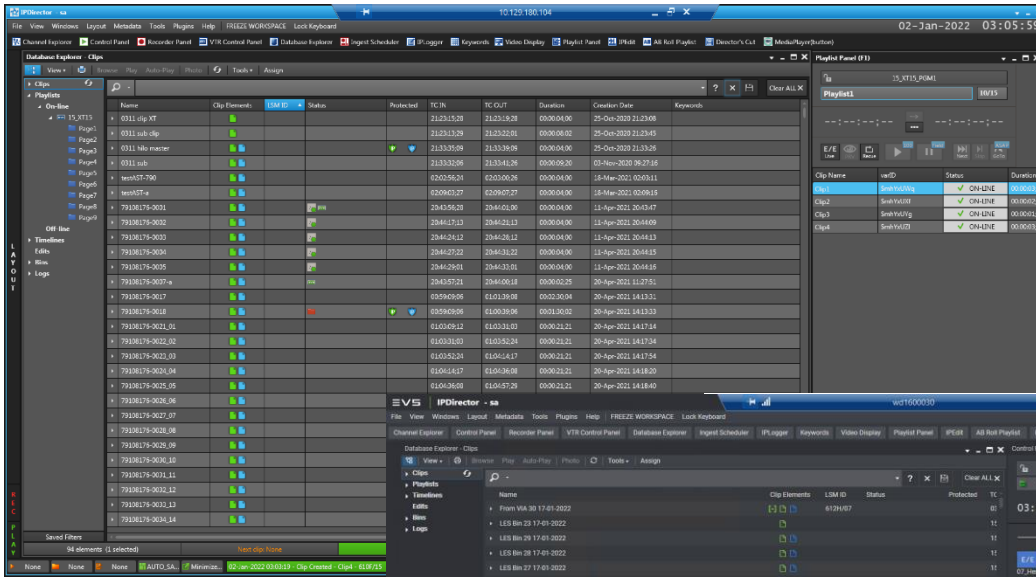
We've reskinned IPDirector to match the look seen in our IPD VIA applications and provide a better user experience for operators. You can see the evolution of the IPDirector look below.



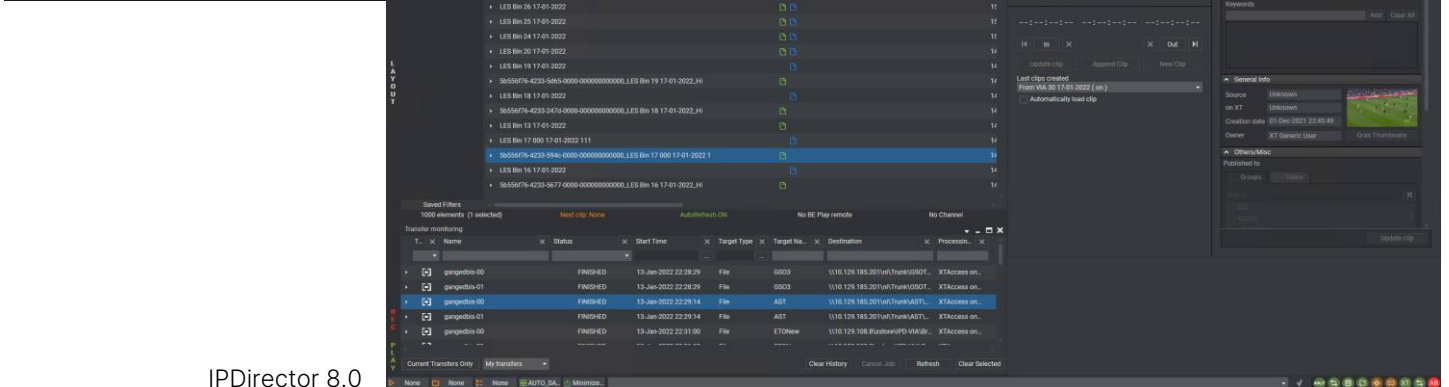
IPDirector 7.92



IPDirector 8.0



IPDirector 7.9.2

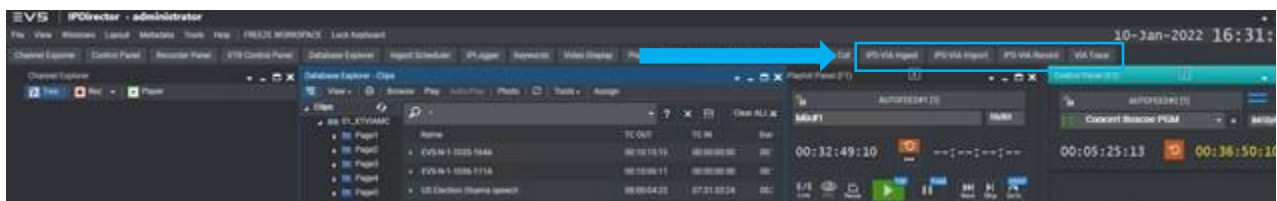


IPDirector 8.0

2.1.2 Integration of IPD-VIA Apps

IPD-VIA Apps are now embeddable into the IPDirector software, allowing operators who work on hybrid setups to keep working in a single interface. Operators will benefit from IPD-VIA Apps and leverage the best of each product's capability.

Ingest, Record, Import and VIA Trace are the first apps that will be integrated into IPDirector 8.0. More apps will follow.



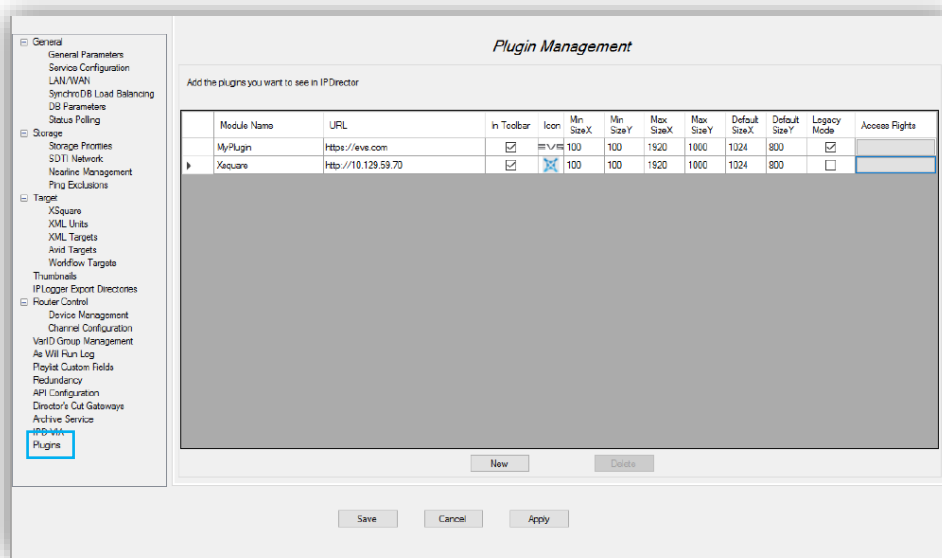
NOTE:

- IPD-VIA 1.13 is needed to be compatible with IPDirector 8.0.
- IPD-VIA User is created automatically on the IPD-VIA side if the User doesn't exist yet. The Default User Profile can be configured in the Remote Installer.

2.1.3 Plugin Management

Operators with some development skills were able to create plugins based on XML Files for IPDirector. Now, to ease the configuration of IPDirector Plugins it is possible to create them in the Remote Installer. A new tab has been added called "Plugins". This tab will allow you to create a plugin for IPDirector without needing to master XML.

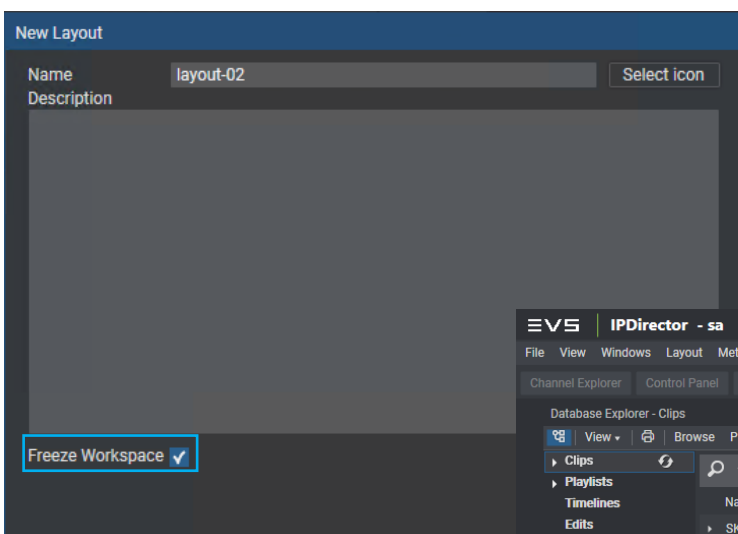
Plugins in the Remote Installer are valid for the complete setup - plugins created as XML Config are only valid on the machine where the XML File is stored.



Plugins defined in the Remote Installer are accessible by administrator users only if no visibility for groups is defined. If a group is defined in the settings, then the visibility is limited to the defined group. Plugins defined at XML level still have the same behaviour as before. When no group is defined it is visible for all groups, when a group is defined in the XML the plugin is only visible for that group.

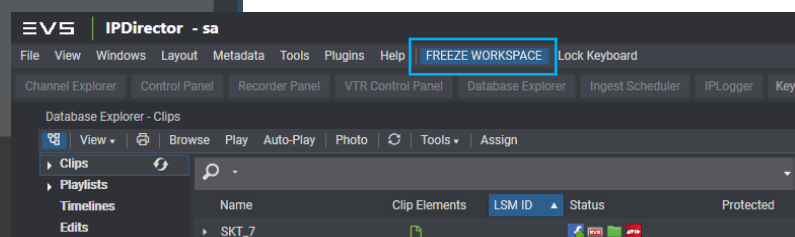
NOTE:

- The file location for XML Plugins is programfiles(x86)\EVS Broadcast Equipment\IP-Director\PluginsConfiguration
- Once a plugin based on a URL has been defined at Remote Installer level, the URL Config part of the XML File is ignored.



2.1.4 Layout Management

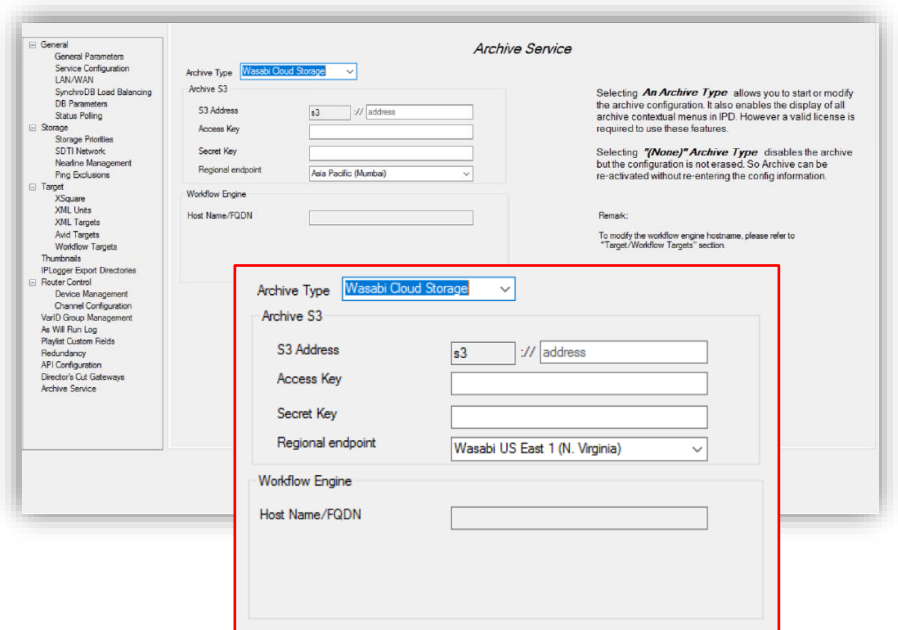
A new "Freeze Workspace" parameter has been added when creating a new layout. If the Freeze Workspace option is selected when the layout has been created, the workspace will automatically be frozen, and you will not be able to move or close any window in the layout.



2.1.5 Archive Add-On 1.2

IPDirector Archive capabilities are increased with Wasabi Cloud Storage support. In the Archive Service section of the Remote Installer a new archive type is added: "Wasabi Cloud Storage". When selecting this archive type the following parameters need to be configured: S3 address, Access Key, Secret Key and Regional Endpoint.

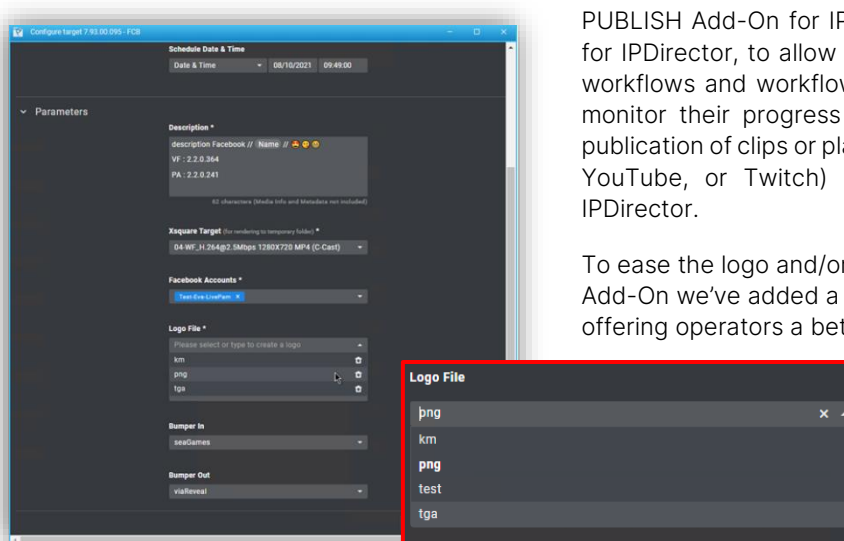
Archive Add-On 1.2 now supports the following archive systems: Amazon S3 and Wasabi Cloud Storage.



2.1.6 Publish Add-On 2.3

PUBLISH Add-On for IPDirector is used, together with VIA Flow for IPDirector, to allow IPDirector to design simple and complex workflows and workflow tasks, to start these workflows and to monitor their progress and status. They can be used for the publication of clips or playlists to social media (Facebook, Twitter, YouTube, or Twitch) or to a generic workflow (CMS) from IPDirector.

To ease the logo and/or bumper selection when using Publish Add-On we've added a drop-down list as a selection tool offering operators a better user experience.



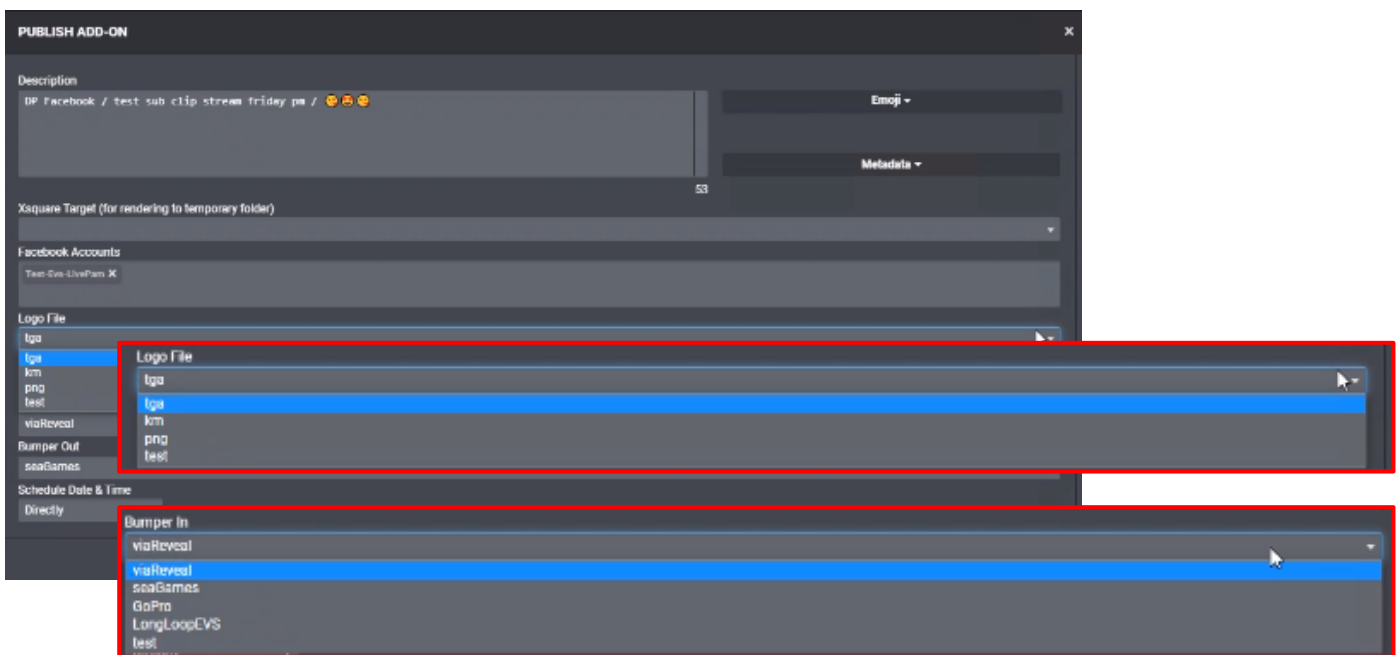
3. IPWeb

IPWeb is a web-based application for local and remote production.

3.1 New Features

3.1.1 Publish Add-On 2.3

Similarly to IPDirector, the Publish Add-On brings a better user experience by adding a drop-down list when a logo or bumper needs to be selected.

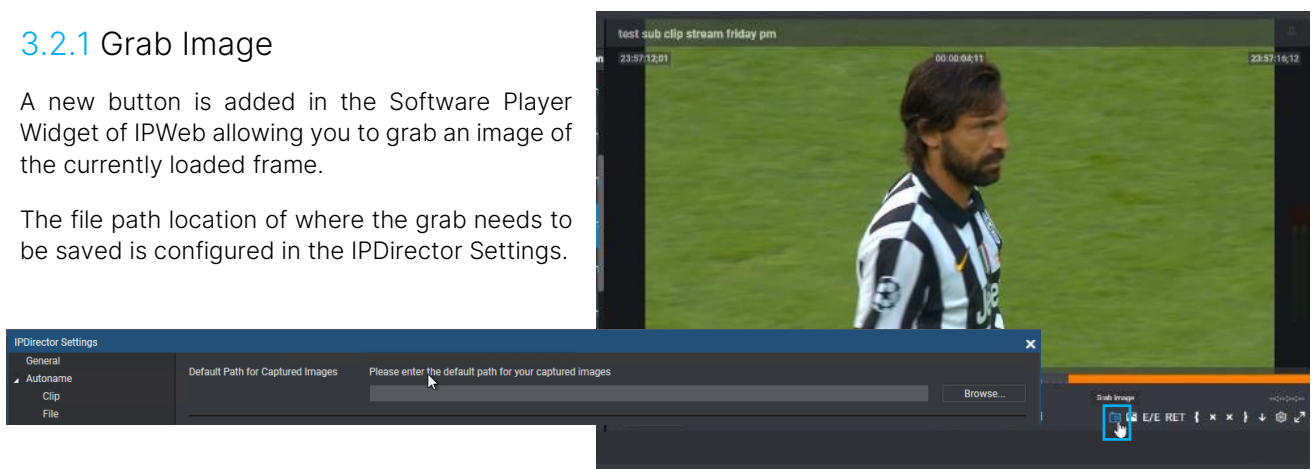


3.2 Improvements

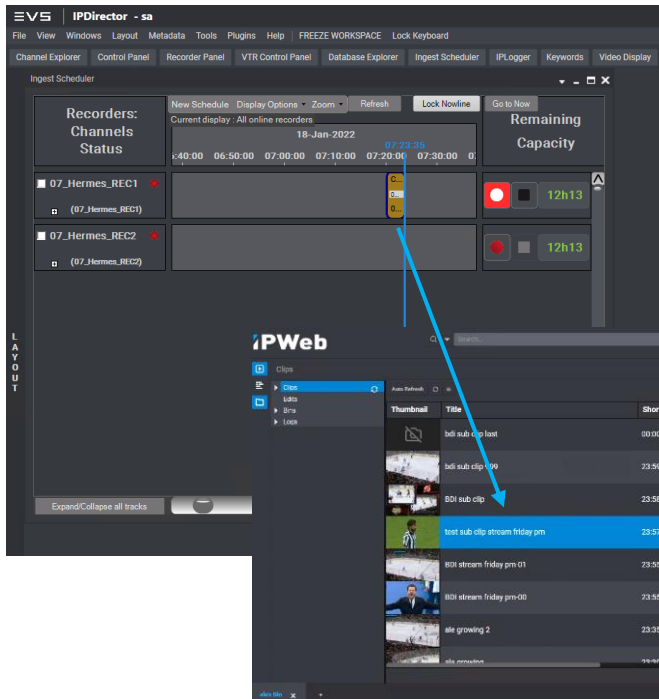
3.2.1 Grab Image

A new button is added in the Software Player Widget of IPWeb allowing you to grab an image of the currently loaded frame.

The file path location of where the grab needs to be saved is configured in the IPDirector Settings.



3.2.1 Playout Growing Clips



Until now it was only possible to play out growing clips if a TC OUT was defined in the Ingest Scheduler on IPDirector. In the latest version of IPWeb it is now possible to play out growing clips even if the TC OUT is not defined in the Ingest Scheduler or in the case of a Crash Record.

4. Software Downloads & Manuals

Please refer to the [Support Page](#) of the EVS Website and the [Download Area](#) for manuals, release notes and software packages to download.

If you don't already have an EVS login, you'll be invited to create a personal EVS account, to help ensure that you're kept up to date with only the most relevant information and updates. This will also allow you to download all the information you need, completely free of charge.



→ [evs.com](https://www.evs.com)

