

# Operators' ProNews

## EVS Asset Management

Package 20.3 | July 2022



### Corporate

+32 4 361 7000

### North & Latin America

+1 973 575 7811

### Asia & Pacific

+852 2914 2501

### Other regional offices

[evs.com/contact/offices](https://evs.com/contact/offices)

→ [evs.com](https://evs.com)

## Contents

1	INTRODUCTION.....	3
1.1	MediaCeption 1.0.....	3
1.2	IPDirector 8.1.....	3
1.3	IPWeb 2.12.....	3
2	MEDIACEPTION .....	4
2.1	New Features.....	4
3	IPDIRECTOR .....	5
3.1	New Features.....	5
3.2	Updates .....	8
4	IPWEB.....	9
4.1	New Features.....	9
5	SOFTWARE DOWNLOADS & MANUALS .....	10

## 1. Introduction

In this newsletter, we're proud to introduce the latest upgrade to IPDirector. The goal is to bridge the gap between IPDirector and IPD-VIA, assuring a smooth transition that uses the best of both worlds. This new release incorporates the MediaCeption Signature Solution, a complete production asset management package for fast and easy content turnaround. For more information on [MediaCeption Signature](#), please visit our [website](#).

Alongside these developments, there are also new features and improvements for IPWeb.

### 1.1 MediaCeption Signature

This upgrade brings together the MediaCeption Signature Solution and the integration of IPD-VIA in IPDirector.

#### New Features

- Sync Mechanism for IPD-VIA User Rights
- IPDirector referencing from IPD-VIA

### 1.2 IPDirector 8.01

This upgrade brings new and improved features to the Production Asset Management application IPDirector.

#### New Features

- Manage Application Visibility
- Search on Database Explorer Tree
- New Channel Management Option
- Ability to Change Camera Angle
- Blackbird Video Integration
- Select different Template for Flatten to XT

#### Updates

- PUBLISH-Add On

### 1.3 IPWeb 2.12

This upgrade brings new and improved features to the Content Management application IPWeb.

#### New Features

- Logsheets Color Coding
- Drag & Drop directly into Bins

## 2. MediaCeption Signature

MediaCeption Signature is our complete end-to-end live production asset management solution that allows quick content turnaround within any production environment.

The solution leverages EVS' industry-leading live production servers, which allow you to ingest any type of baseband or file-based content, media workflow management tools, a storage system and certified integrations with advanced video editing tools to quickly record, import, manage, edit and repurpose all your assets.

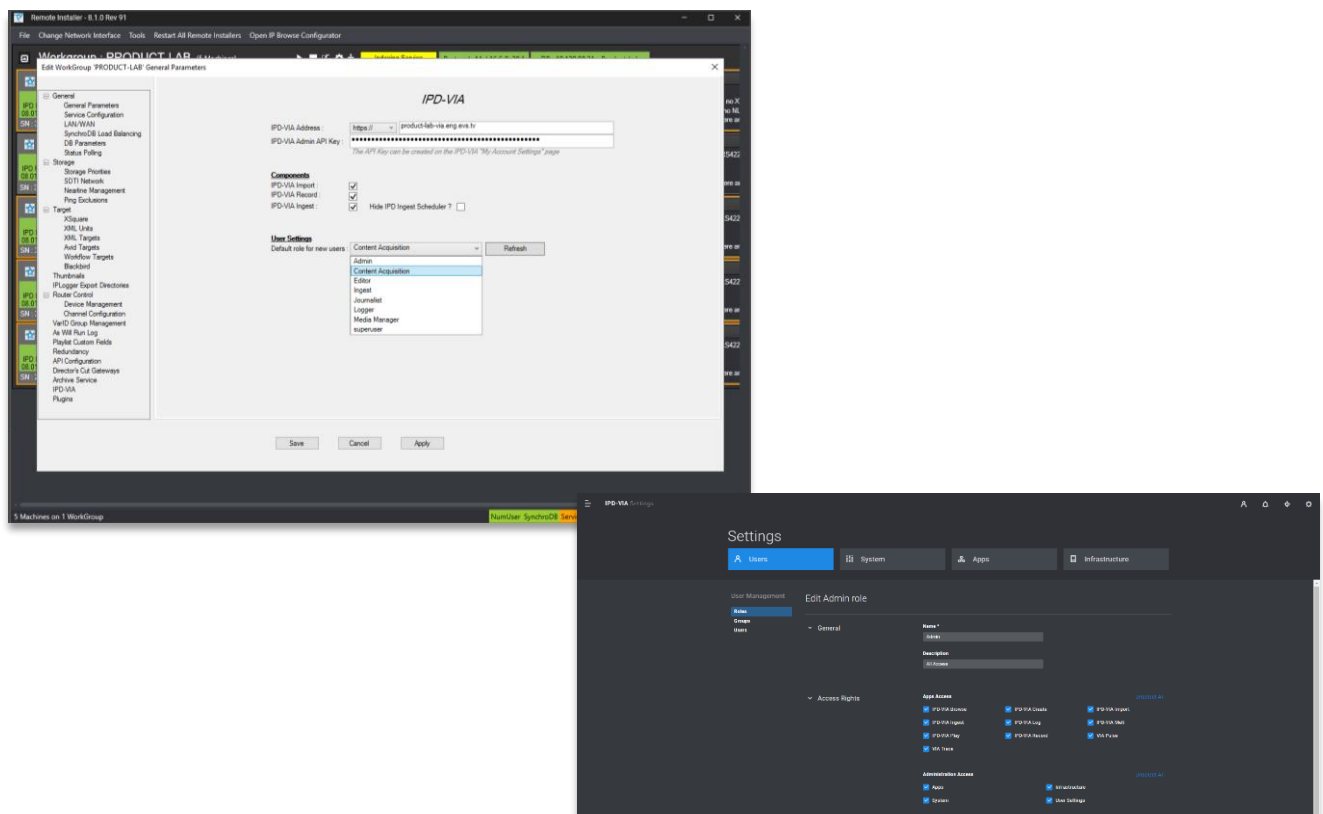
The web-based user interfaces of the solution and advanced proxy file management empower users to instantly access content from any location they choose for remote, multi-site contribution.

### 2.1 New Features

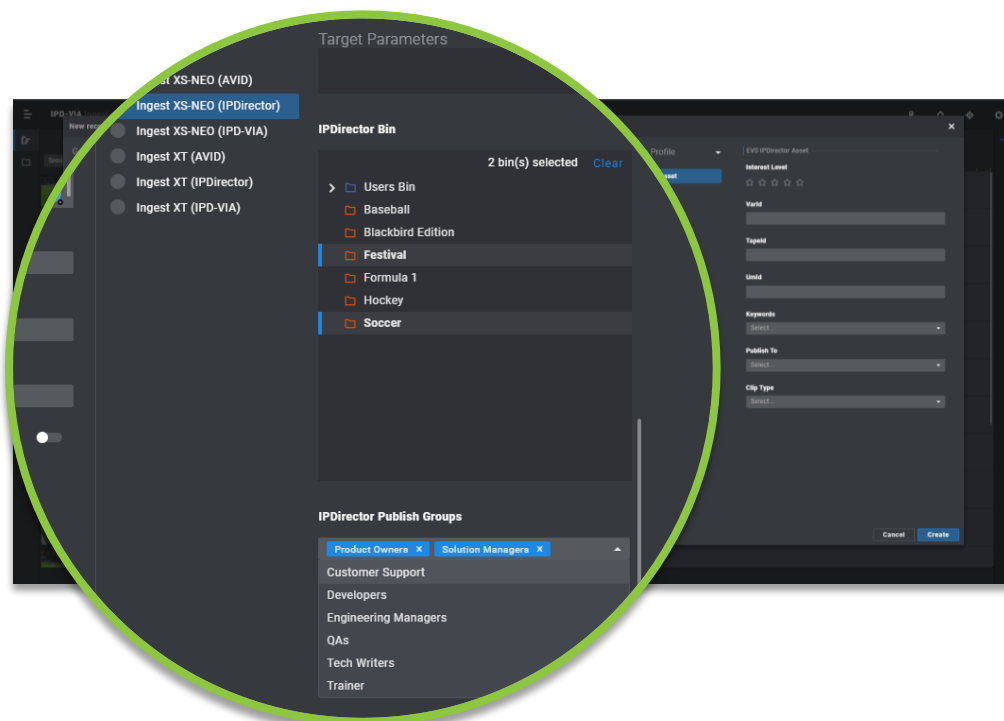
#### 2.1.1 Sync Mechanism for IPD-VIA User Rights

A new sync mechanism for IPD-VIA User Rights on IPD-VIA Apps within IPDirector is introduced. From now on users only see IPD-VIA Apps they have access to.

By default, all users have the same rights which are defined by the IPD-VIA Role selected in the IPDirector Remote Installer. The Remote Installer settings are general and overwrite any of the individual user privileges. If the user needs to be elevated, an admin needs to make those changes inside the IPD-VIA User Settings.



### 2.1.1 IPDirector referencing from IPD-VIA



You can now ingest, record and import directly on an IPDirector Nearline from IPD-VIA. It doesn't matter whether you access the IPD-VIA Apps from inside IPDirector or via a browser interface. The Bins and Publish Groups are also inherited, making it possible to ingest content directly into IPDirector bins and define an IPDirector publish group for making the content available to the right operators.

## 3. IPDirector

The IPDirector content management suite features dynamic applications for live media content browsing, control, edit and playout, relying on a central database. With its open, modular architecture, IPDirector can be adapted to any production environment and allows for easy integration and media exchange with any third-party system. Each interface is easy-to-use, guaranteeing fast and efficient content turnaround.

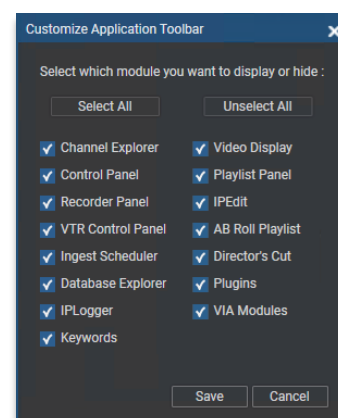
### 3.1 New Features

#### 3.1.1 Manage Application Visibility

With the latest IPDirector version you can now change the visibility of the applications in the Application Toolbar, to optimise usability. You can easily ensure that you only see the applications you are using and hide the ones you don't use.

This feature is not linked to user rights, it's simply to display relevant applications based on your personal usage. All users can modify these preferences.

Go to "View" in the Menu Bar and click on "Application Toolbar" and "Customize". A Customize Application Toolbar window will open, allowing you to select and/or unselect which applications you want to display or hide.





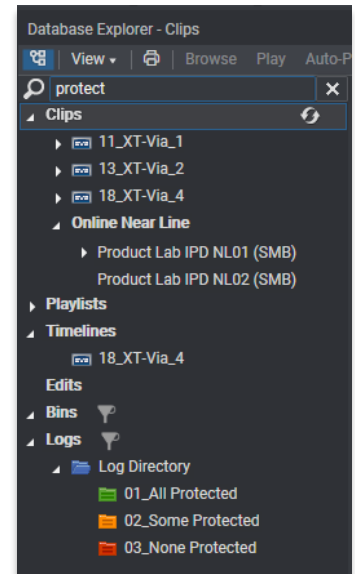
### 3.1.3 Search on Database Explorer Tree

It's now possible to find the Bin or Logsheet you're looking for efficiently without scrolling through the entire tree. In the Database Explorer, at the top of the Tree section, you can find a text bar allowing you to type in the search criteria. The results will automatically be updated while typing your search criteria.

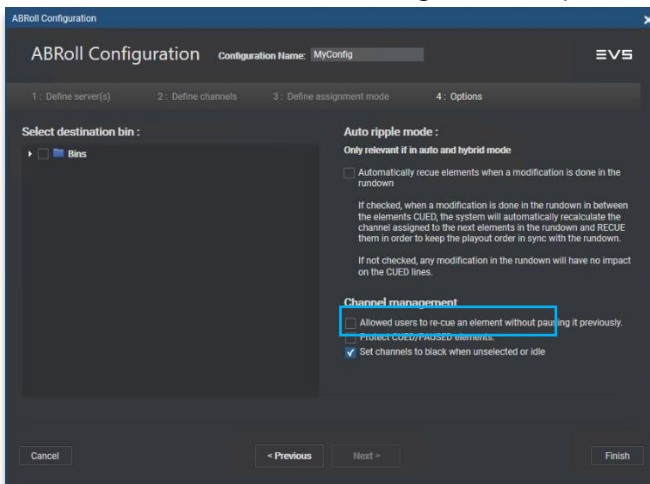


#### NOTE:

- The search only applies on the tree directory structure, not on the content in the Logsheets or Bins.



### 3.1.3 New Channel Management Option



In the ABRoll application, a new Channel Management option is added - "Set channels to black when unselected or idle".

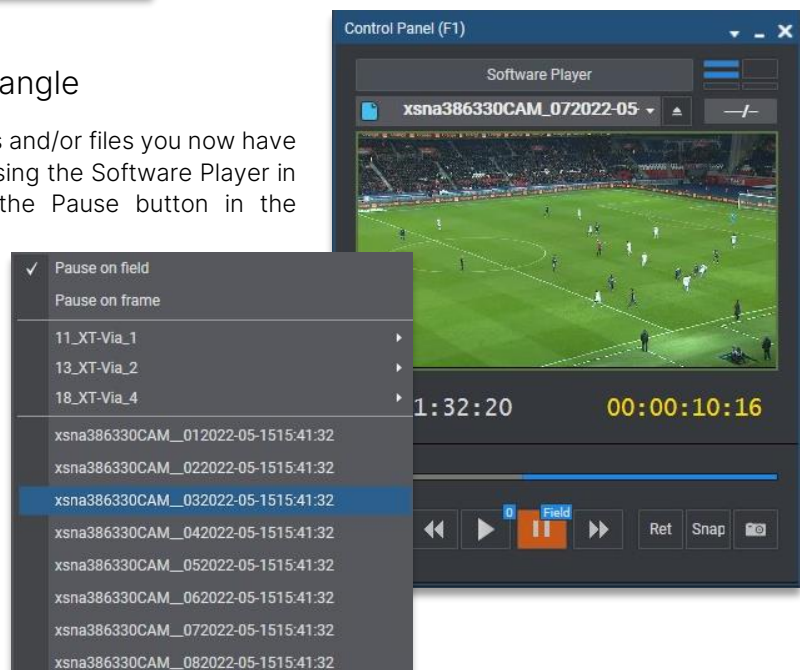
When enabling the option the channel output will be black any time the ABRoll configured channel goes IDLE, when loading an empty ABRoll Playlist (without any channel selected), when a story is floated in a newsroom computer system, or if a channel isn't assigned to a story and "CUE elements from this position" is used.

By default the new Channel Management Option is unselected in the ABRoll configuration.

### 3.1.4 Ability to change camera angle

When recording or ingesting ganged clips and/or files you now have the ability to change the camera angle using the Software Player in a Control Panel. By right-clicking on the Pause button in the Software Player's Control Panel a contextual menu will appear listing all ganged clips or files.

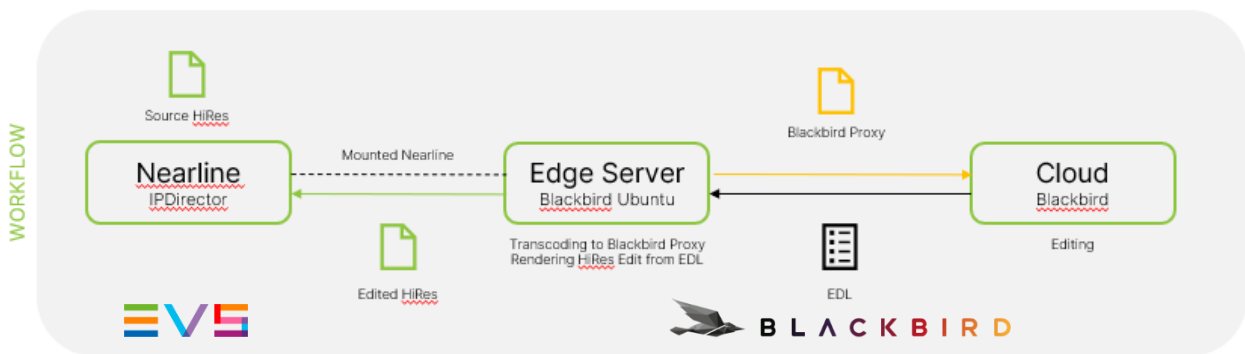
This new feature works for both closed or growing clips and files and can be changed whilst playing.



### 3.1.5 Blackbird Video Integration

Last year [EVS announced a partnership with Blackbird](#), with a deployment for international sporting events. Blackbird is a professional video editing application. They provide rapid remote access to video content for the easy creation of clips, highlights and longer form content to multiple devices and platforms. If you want to find out more about [Blackbird](#) refer to their [website](#).

In the latest IPDirector a Blackbird Integration is now available, allowing you to send existing and growing files from the Nearline directly to the Blackbird Server, allowing you to quickly edit files created by IPDirector in Blackbird. The HiRes file on the Nearline is sent to the Blackbird's Edge Server and a Blackbird Proxy file will be created in the Blackbird Cloud enabling you to create your edit with the Blackbird Video Application. Once your edit is finished an EDL File (Edit Decision List) will be transferred back to the Edge Server and an edited HiRes file is transferred back to the IPDirector Nearline.

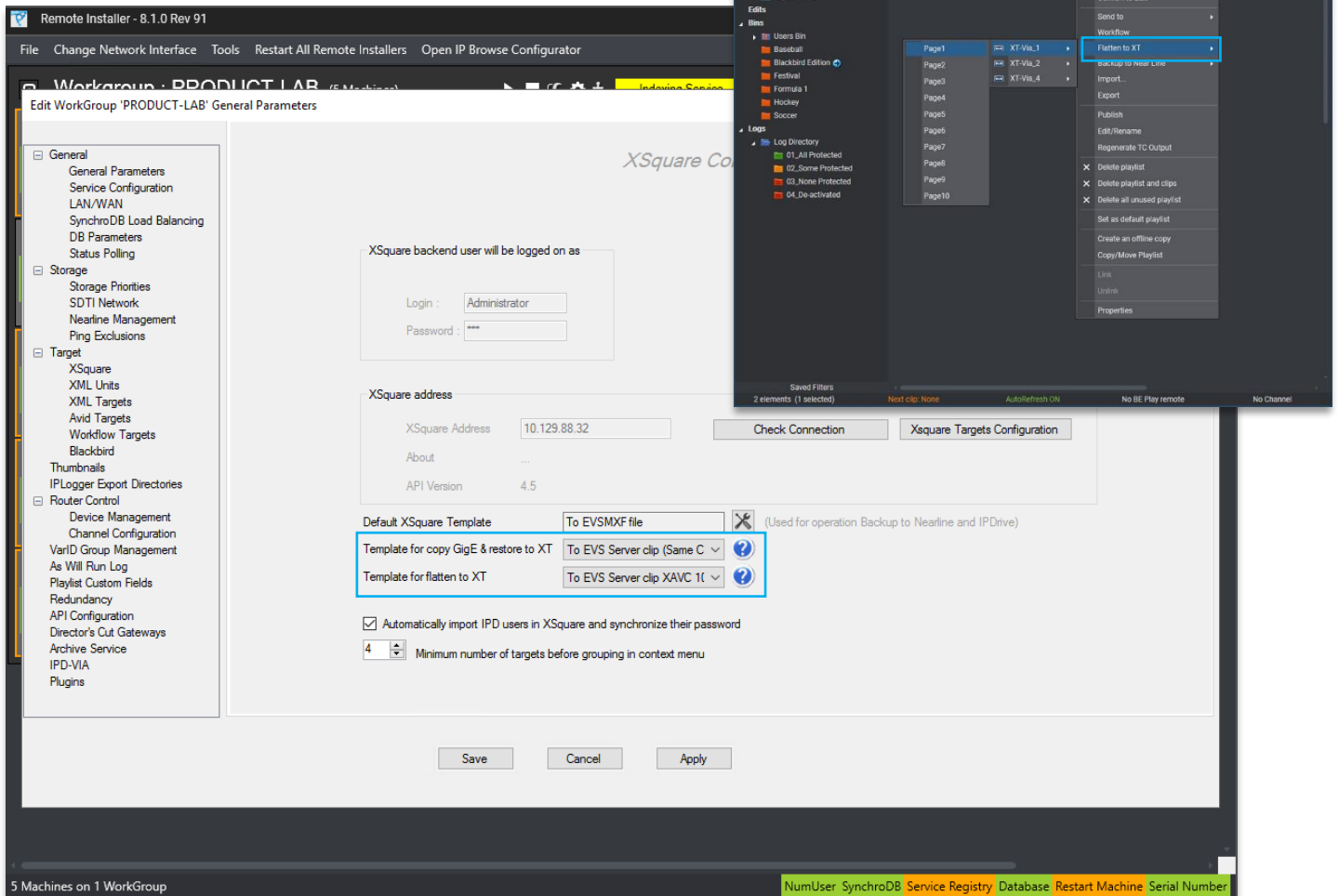


Files on the Nearline can be sent to Blackbird by right clicking on the desired file and selecting "Send to Blackbird" from the contextual menu. It is also possible to add this as a Post Process action in the Bin Rules of a Bin, allowing you to automatically send files to Blackbird.

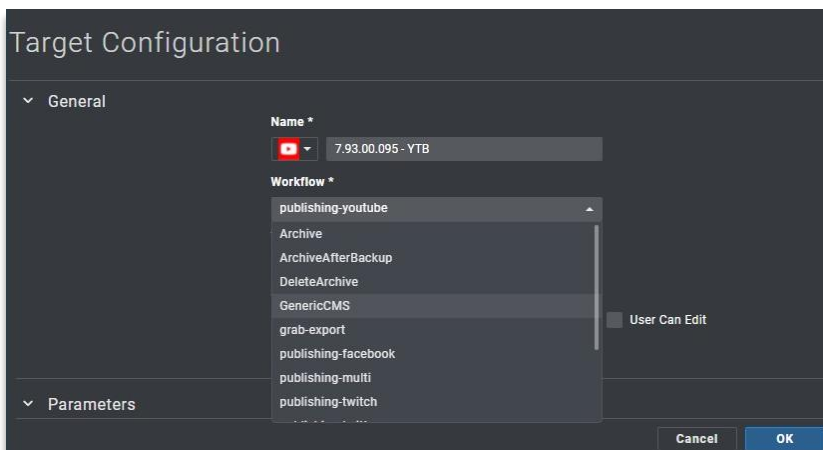
The configuration of the Blackbird API Information and Ingest Information is done in the Blackbird Target Tab in the IPDirector Remote Installer.

### 3.1.6 Select different Template for Flatten to XT

In the Remote Installer you are now able to select a different template for "Flatten to XT" than for "Copy GigE & Restore to XT". You can find this configuration in the Xsquare Configuration Tab and this supports the Flatten of Playlists, Timelines and Edits into a Clip.



## 3.2 Updates



### 3.2.1 PUBLISH Add-On

Workflows created by PUBLISH Add-On are now displayed in alphabetical order, making them easier to find. The ability to search for a workflow by typing its name rather than scrolling through a long list is still supported.

Following API deprecation we've removed Twitch support from the PUBLISH Add-On. It is therefore no longer possible to send a video to Twitch.



## 4. IPWeb

IPWeb is a web-based application for local and remote production.

### 4.1 New Features

#### 4.1.1 Logsheet Color Code

##### Logs Tree View Elements

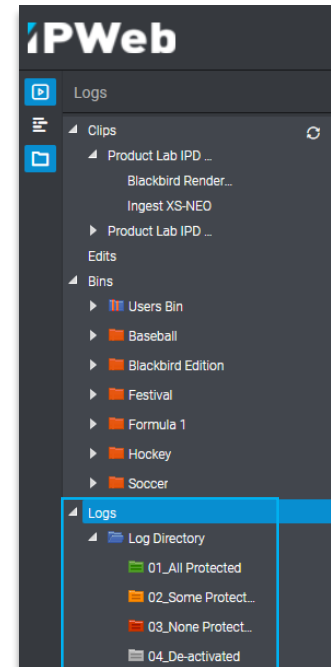
Selecting this branch displays, in the Elements grid, all the logs present in the IPDirector database.

Expanding the Logs view shows the logsheets and log directories in the Tree view, as detailed in the following table.

Tree Branch / Sub-Branch	Description / Elements displayed in the Elements grid
	<b>Log Directory:</b> shows all the logs from all the log sheets which are in the selected directory.
	<b>Log Sheet:</b> shows all the logs which are in the selected log sheet.
	Log sheet of which all the logs are protected.
	Log sheet of which some of the logs are protected.
	Log sheet of which none of the logs is protected.
	Log sheet which has been de-activated.

Following IPDirector logsheet color implementation we've now brought this feature to IPWeb too.

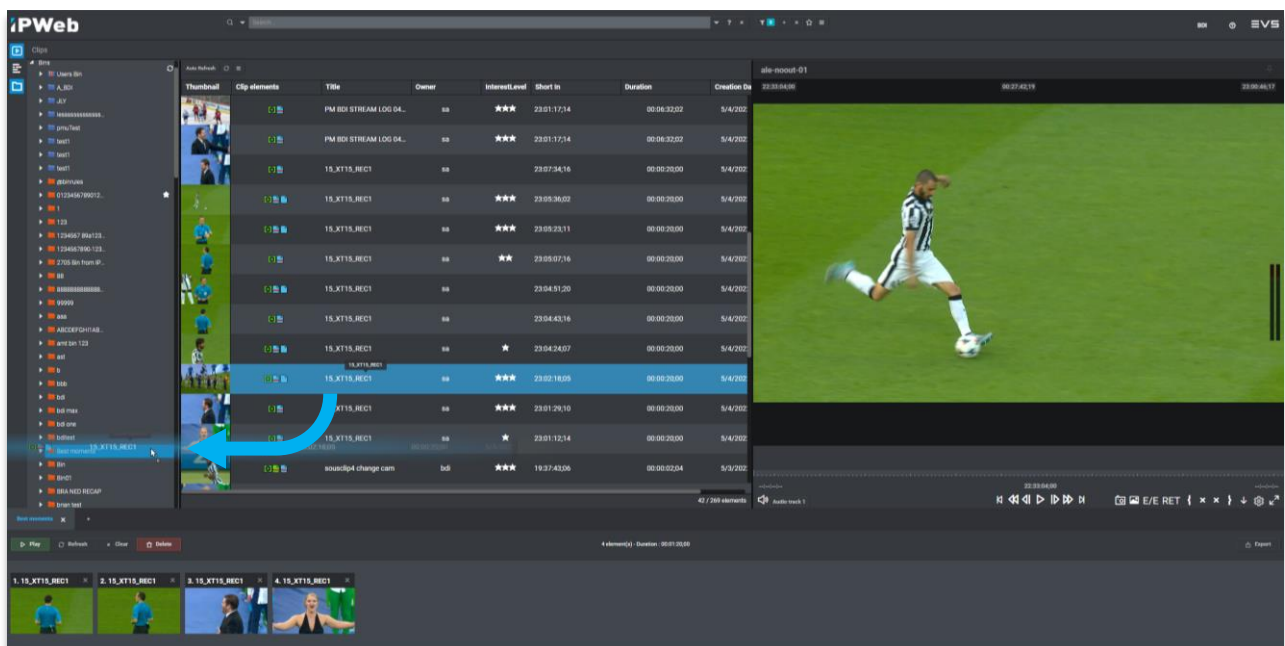
This helps operators to quickly understand the state of the logs within a logsheet from a quick glance within the IPWeb Interface.



#### 4.1.2 Drag & Drop directly into Bins

You can now speed up the sending to a Bin process thanks to this new feature in the latest IPWeb update.

It's now possible to simply drag & drop multiple files directly into a Bin on the Tree Panel from the Clip Grid. You no longer need to open a Bin in order to add content to it from the Bin View at the bottom of the interface. However, this action is still supported if needed.



## 5. Software Downloads & Manuals

Please refer to the [Support Page](#) of the EVS Website and the [Download Area](#) for manuals, release notes and software packages to download.

If you don't already have an EVS login, you'll be invited to create a personal EVS account, to help ensure that you're kept up to date with only the most relevant information and updates. This will also allow you to download all the information you need, completely free of charge.



→ [evs.com](https://evs.com)

