



Cerebrum UI packages

Premade interfaces to kickstart your productions

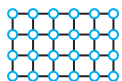
→ evs.com/cerebrum



Product overview

In Cerebrum, almost **everything is customizable** - from your router control panels, to your device control interfaces, to the way your end-users can configure the multiviewer wall. Designing and customizing these graphical user interfaces from scratch can be a long and costly process, while most of the requirements for each interface are similar in all Cerebrum projects. That's why we've designed a set of **premade UI packages** which already include most of the required functionality for advanced routing, device control, multiviewer control, flexible XY routing panels and more.

Core benefits



APPLY TO ANY CONFIGURATION

All UI packages are built to work with any kind of routemaster configuration, no matter if you're working with SDI, or IP, or both. Changes to your routing tables will show immediately in the UIs.



EASY TO USE

The UI package are easy to install and personalize to meet your requirements. You don't need to be trained on the Cerebrum Designer app and you don't have to rely on any customization services.



SPEED UP DEPLOYMENT

Building customized interfaces from scratch can take days, even weeks. With the UI packages you are good to go as soon as your system has been commissioned.



ADD YOUR OWN CUSTOM PANELS

You can use the UI packages as a starting point and then add your own customized panels at a later stage. The UI framework allows you to add a button to the main navigation bar that links to any Cerebrum control panel.



YEARS OF EXPERIENCE

We've gathered all the knowledge and experience our Cerebrum designers have accumulated over the years since Cerebrum was released, and combined it all into these UI packages.



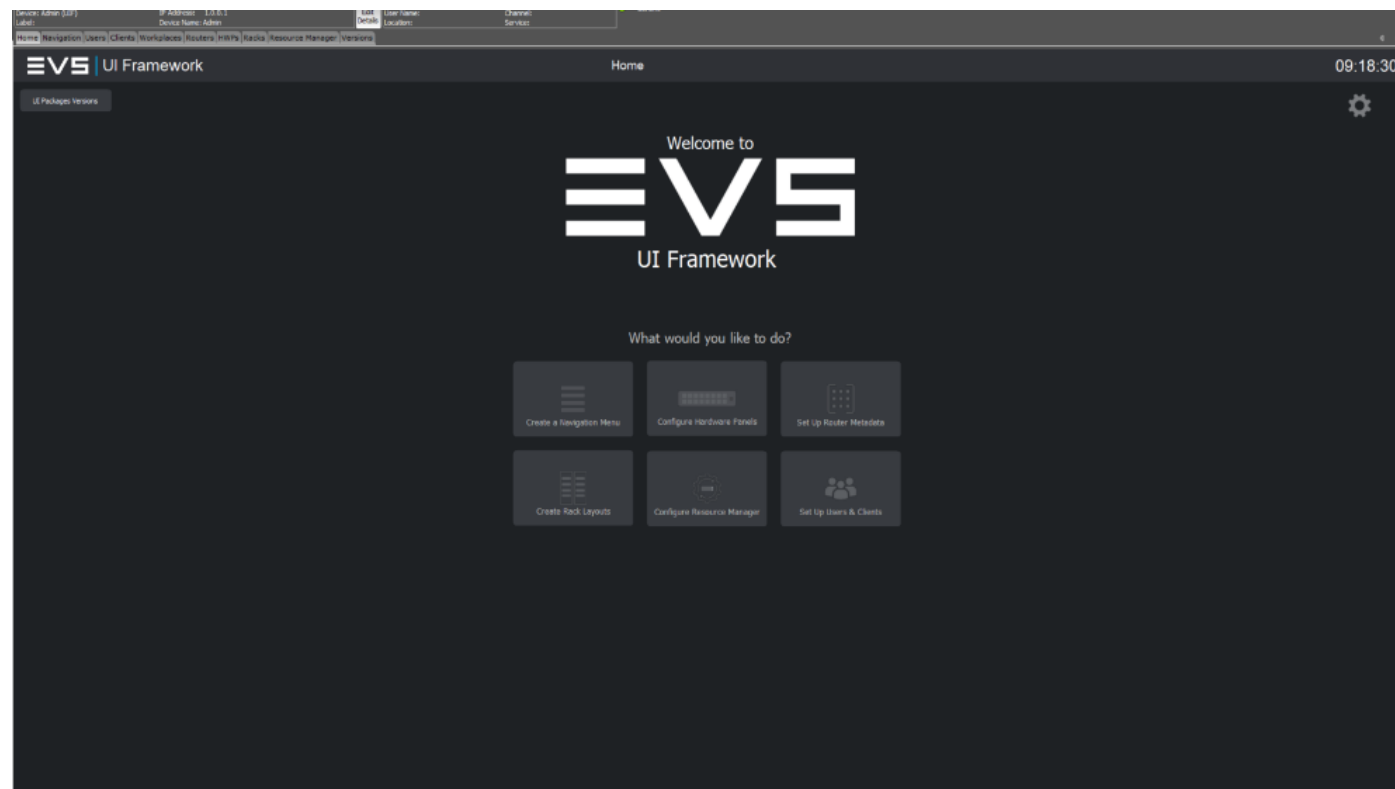
CONTINUOUS IMPROVEMENTS

We continue to develop and improve the user interfaces in these UI packages. Please reach out to your local EVS support teams for the latest updates.



UI Framework

The framework which glues all the UI packages together



UI Framework home page

The framework is a container for all the packages, allowing for configuration and customization settings for each package.

System settings

Manage your configuration such as the header bar clock settings.

Versions

A space to view the versions installed of your packages to help keep track of updates and compatibility.

Navigation

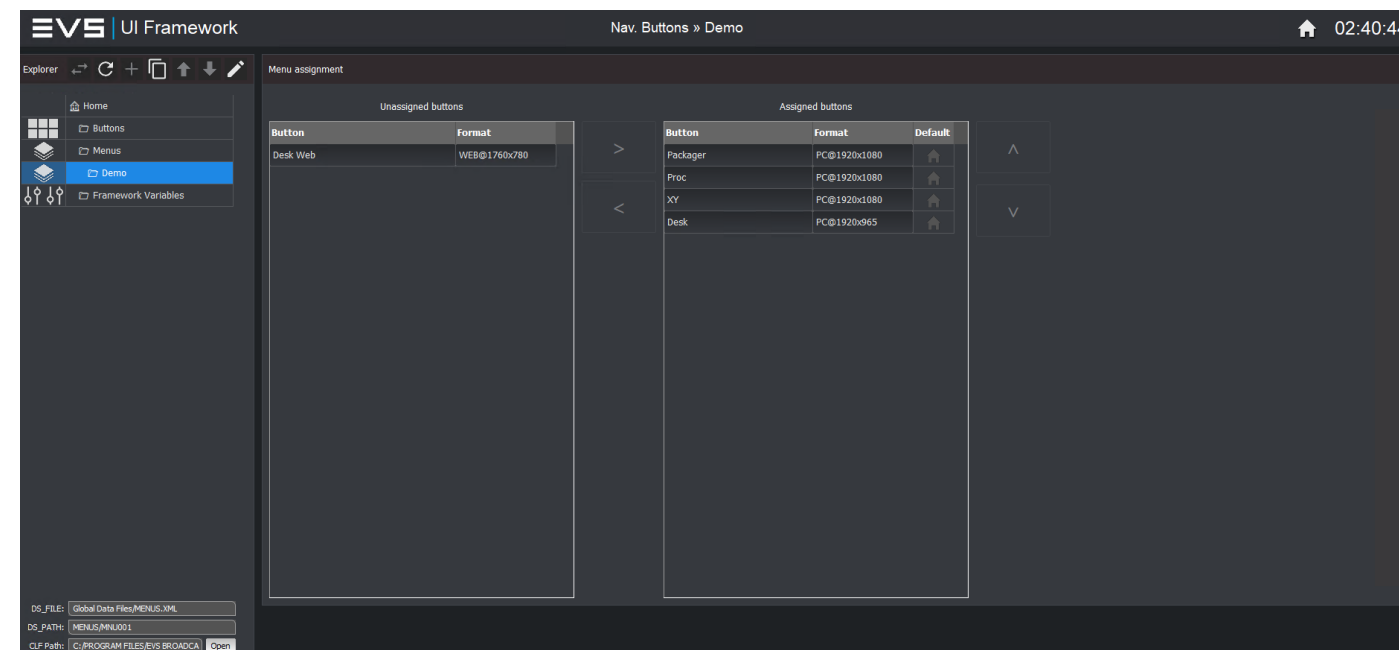
Create your own menu buttons for loading the UIs and menus to display them. The menu settings let you manage access to UIs per user, client or workplace so everyone has only what they need.

User and group settings

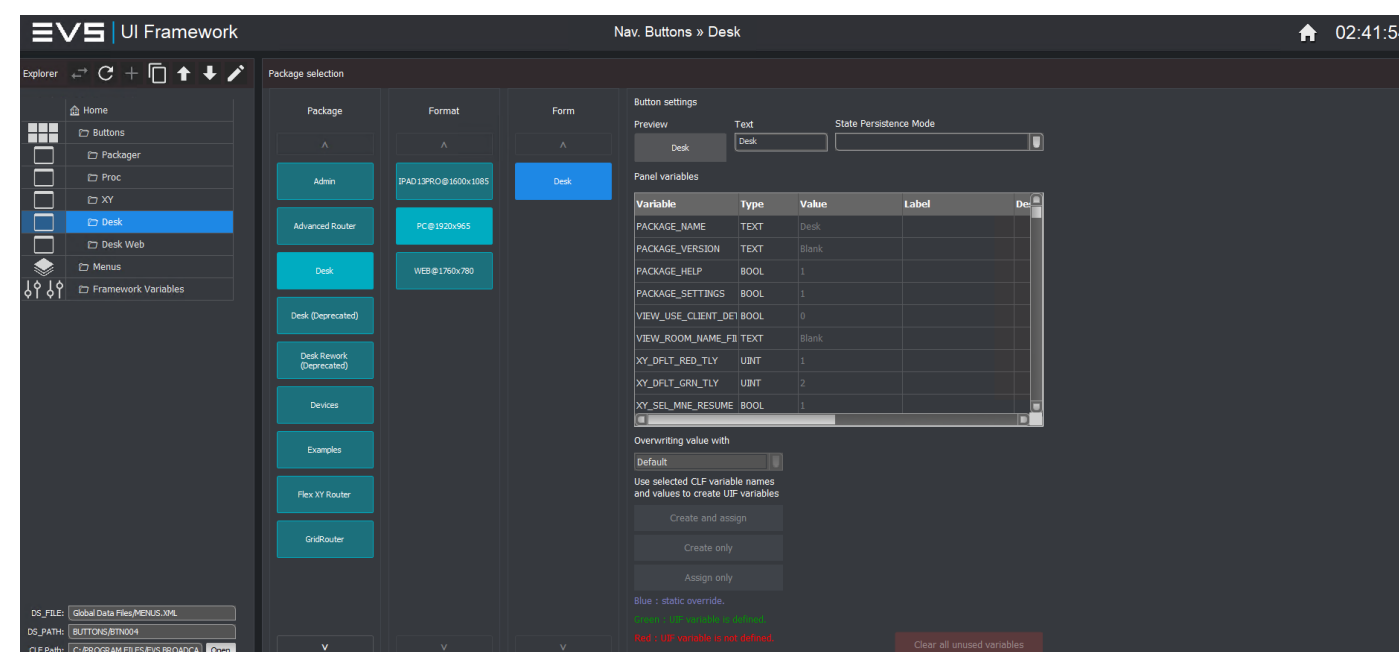
Assign a menu to specific users and configure different settings per user or group i.e. to set different routing categories per user group.

Datstores

An easy to use database editor for any extra settings you may wish to store and share throughout your system.



UI Framework navigation bar editor

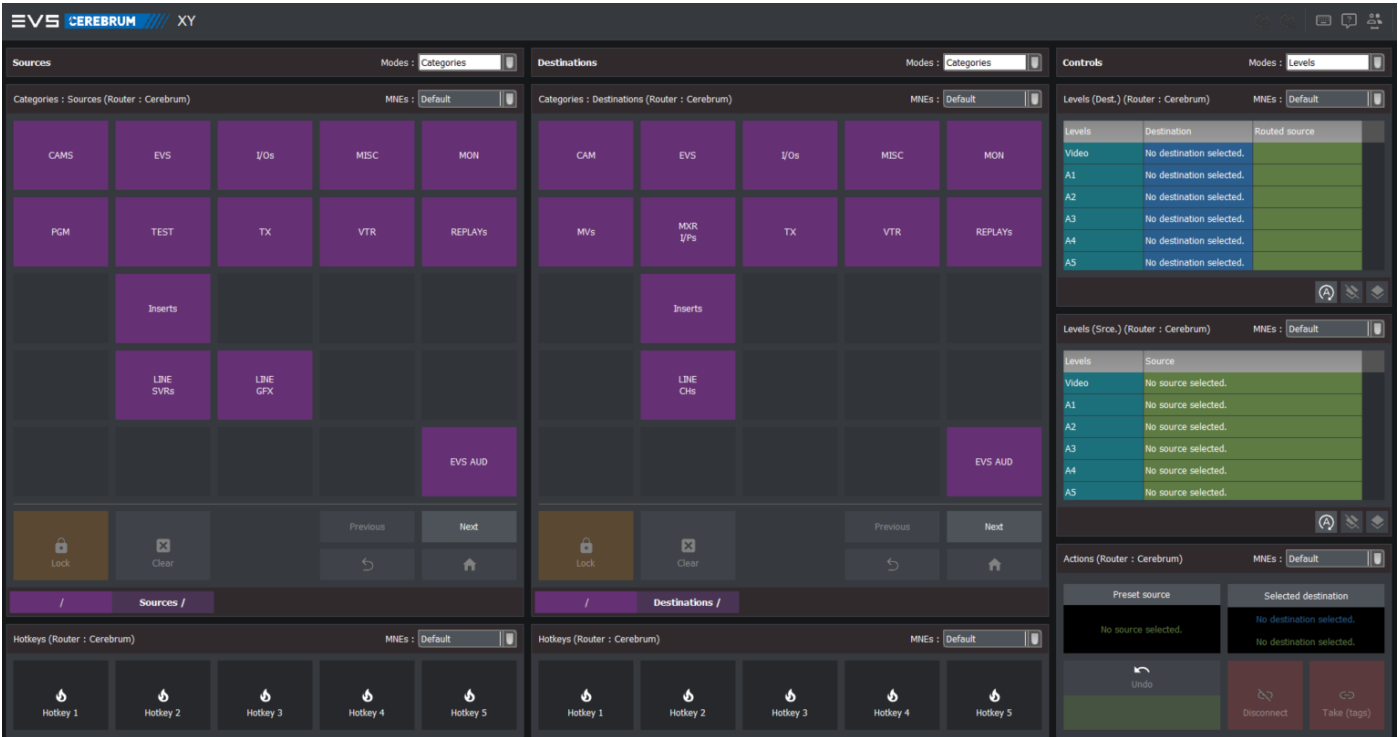


UI Framework Package editor



XY

Customizable XY routing panels



The XY Package delivers a powerful, intuitive routing interface for any operator. With customizable layouts, hotkeys, and support for both category and names-based routing, users can quickly access sources and destinations tailored to their workflow.

The following features and actions can be configured:

- Quick navigation
- Metadata
- Lock/unlock
- Take option
- Modular sections
- Common preset layouts
- Next/Previous
- Home

Category mode

View sources and destinations by category using the native Routemaster tree structure to organise your groups of sources, destinations and salvos. Blank items will also create gaps to arrange your items however you wish on the panels.

Name mode

For larger systems where a category structure is a massive task, use names mode to automatically create a logical structure from the router mnemonics and then navigate using those automated nested groups.

Recent sources

The sources panel also gives access to recently used sources to help you find what you are looking for fast.

Hotkeys

A row of buttons to pin your favourite sources, destinations and salvos to keep them at hand while navigating through the system.

Control modes

Switch between easy level selection with visibility of current routed source per level, QC control to preview before routing, source and destination trace, shuffle presets and the category editor.

Category editor

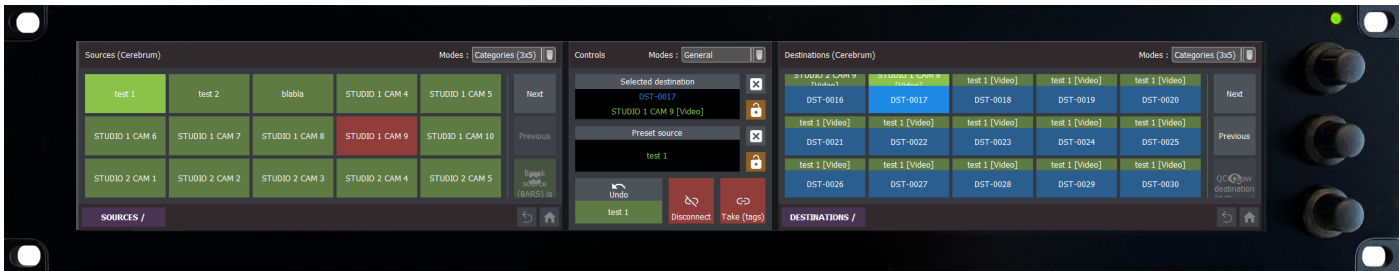
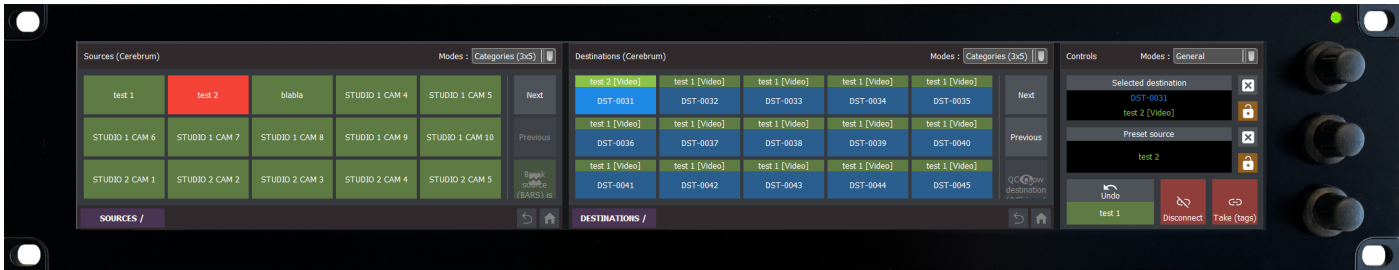
Instantly edit your category items with remove, add, copy and paste with easy UI actions. Inhibit allows you to manage access to certain categories and easily show when resources are not available for use.

Item settings

Extra item settings can be accessed directly from within the XY panel. These include mnemonics and tags editing, source and destination trace, category editing, device linking, a SDP viewer, a salvo viewer and many more.

CTP

This package is also available for the CTP touch screen panels.



Desk

Easily control and configure your multiviewer monitor walls



The Desk panel provides a place to easily control and monitor Multiviewers, Monitors and other devices such as KVMs and speakers. Thanks to areas being split into rooms and workplaces users can quickly find and control any device.

This panel provides a graphical representation of your workspace to make routing and configuring your devices fast and easy. See your monitor stacks and desks with clickable interaction for control.

The following features and actions can be configured:

- Stack Selection
- Easy Routing
- Recall layouts
- Live Tally Display
- Live UMD Display
- Control any device
- Optional Take button
- QC Follow

The Desk UI Package is limited to only work with Neuron View, TAG MCS and Arkona Manifold multiviewers.

Views

Walls, areas and rooms can all be organized into separate rooms and workplaces which give a graphical representation of that monitor stack, providing an easy way to navigate to the area and monitor required. The rooms and workplaces also allow for managing user access to different control room areas. For easy navigation the Views also allow for switching between alternate mnemonics and there is a zoom function for greater detail of a selected head

Easy routing

The sources panel is category driven by Routemaster. Simply select the monitor or pip and then your source for fast easy routing.

Recall layouts

You can browse all the stored snapshots and see which one is active. You can easily recall any of these layouts by selecting one and clicking 'Recall'.

Focus area

Use this area to save delete and recall presets for fast routing configuration. Here you can also access extra configuration settings on devices such as heads and tiles.

Live tally display

The panel can show live tally status on the individual pips with a colour border. This is really helpful when making live changes.

Live UMD display

Similar to the live tally, live UMD status can be shown on the pips reflecting the real status and is a helpful reference between engineers and users.

Control any device

The desk page can be used to control and monitor any kind of device, such as KVM, speakers or on-air lights to give a complete picture of any operating position.

Optional take

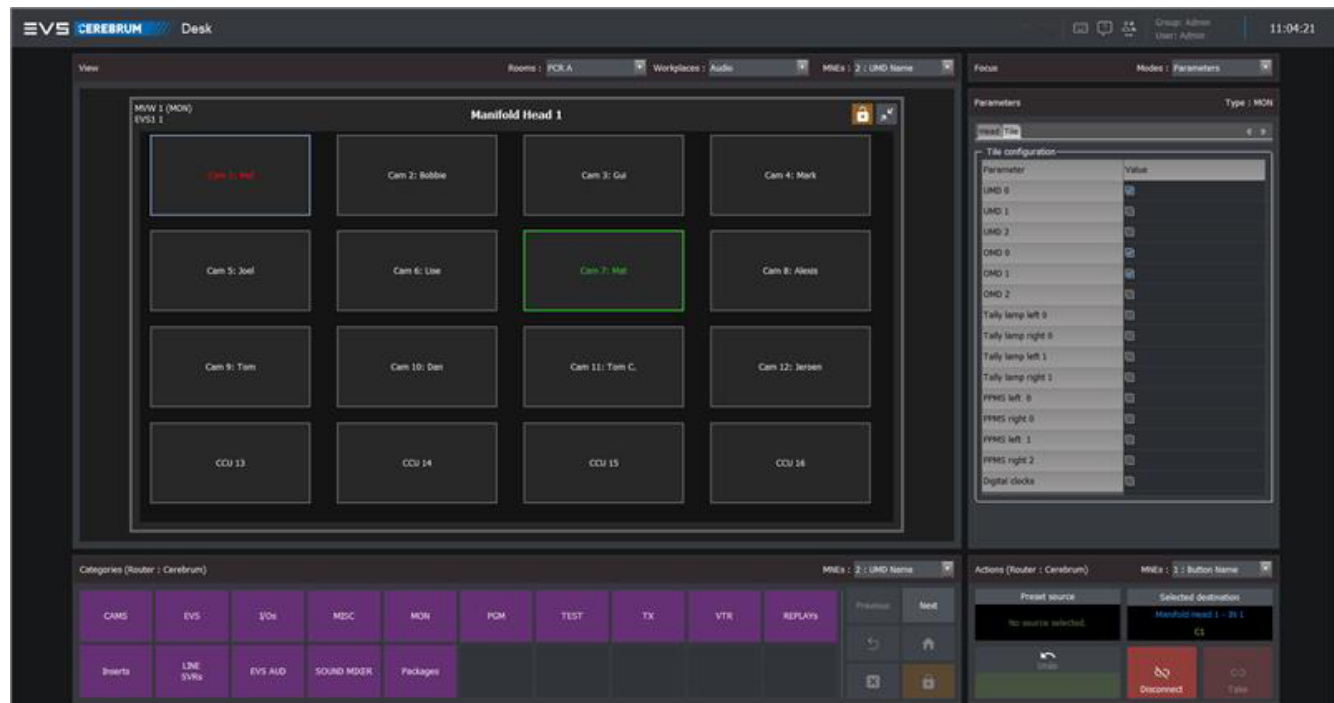
On the routing panel there is an optional take button depending on the user preference.

QC follow

The QC Follow feature is optional on this panel to provide a helpful live monitor of whatever you are routing.

Undo

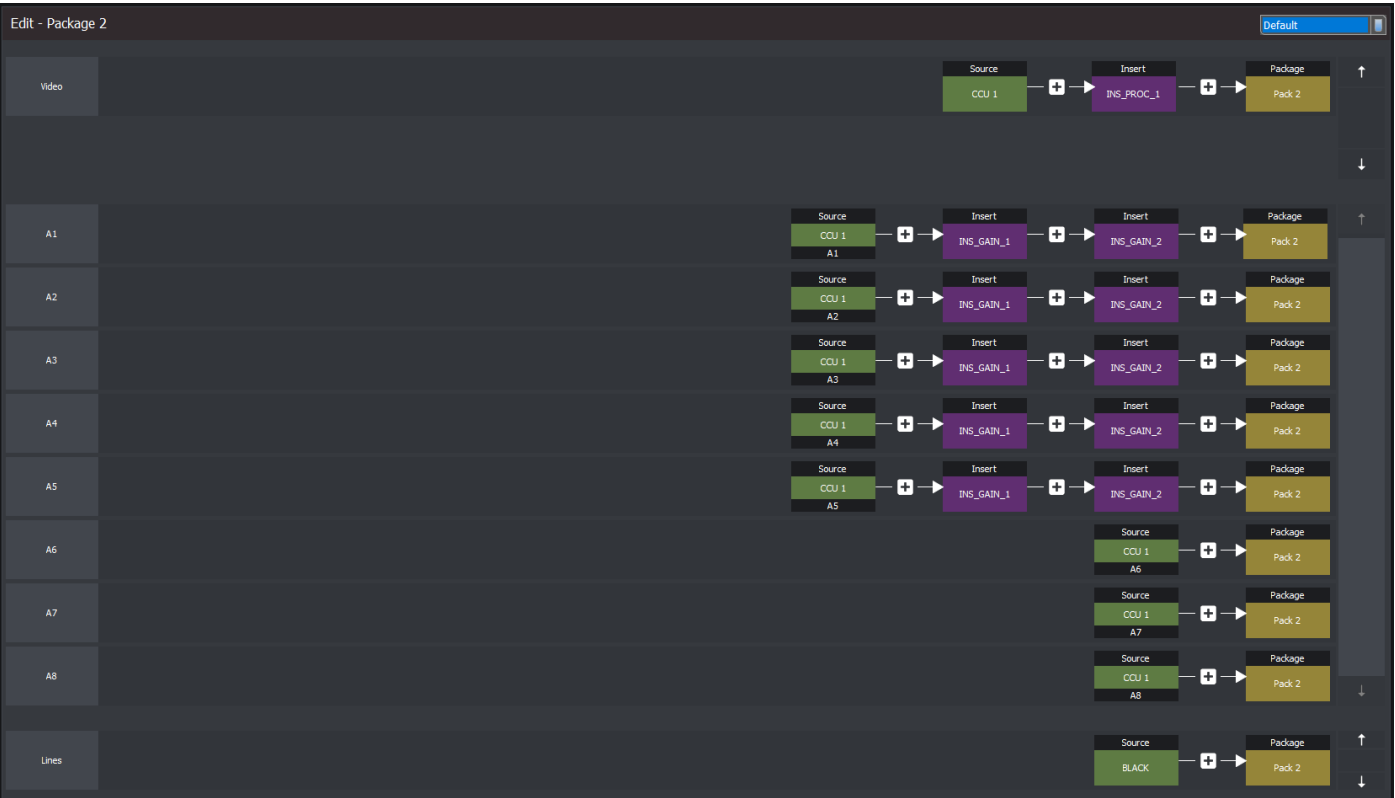
A user can undo the last crosspoint for extra confidence





Packager

Create and configure pre-build sources



The Packager panel empowers users to create, manage, and monitor advanced signal paths or events, including processing inserts and resource reservations. Designed for modern production and MCR environments, it streamlines complex workflows.

Key features

- Visual package creation and editing
- Insert management and trace editor
- Hotkeys and QC follow for rapid operations
- Reservation system for resource management
- Deep integration with Resource Manager
- Supports advanced production signal chains

 The Packager UI Package is limited to only work with Neuron and Imagine SNP

Virtual Source Builder

The packager allows users to build packages to be used as sources. There are 3 different views to select from. All Packages view gives a complete picture of all packages currently configured. The pinned view will show any packages which have been 'parked' for imminent or regular use. The package editor view allows for the creation and configuration of new packages.

Personal configuration

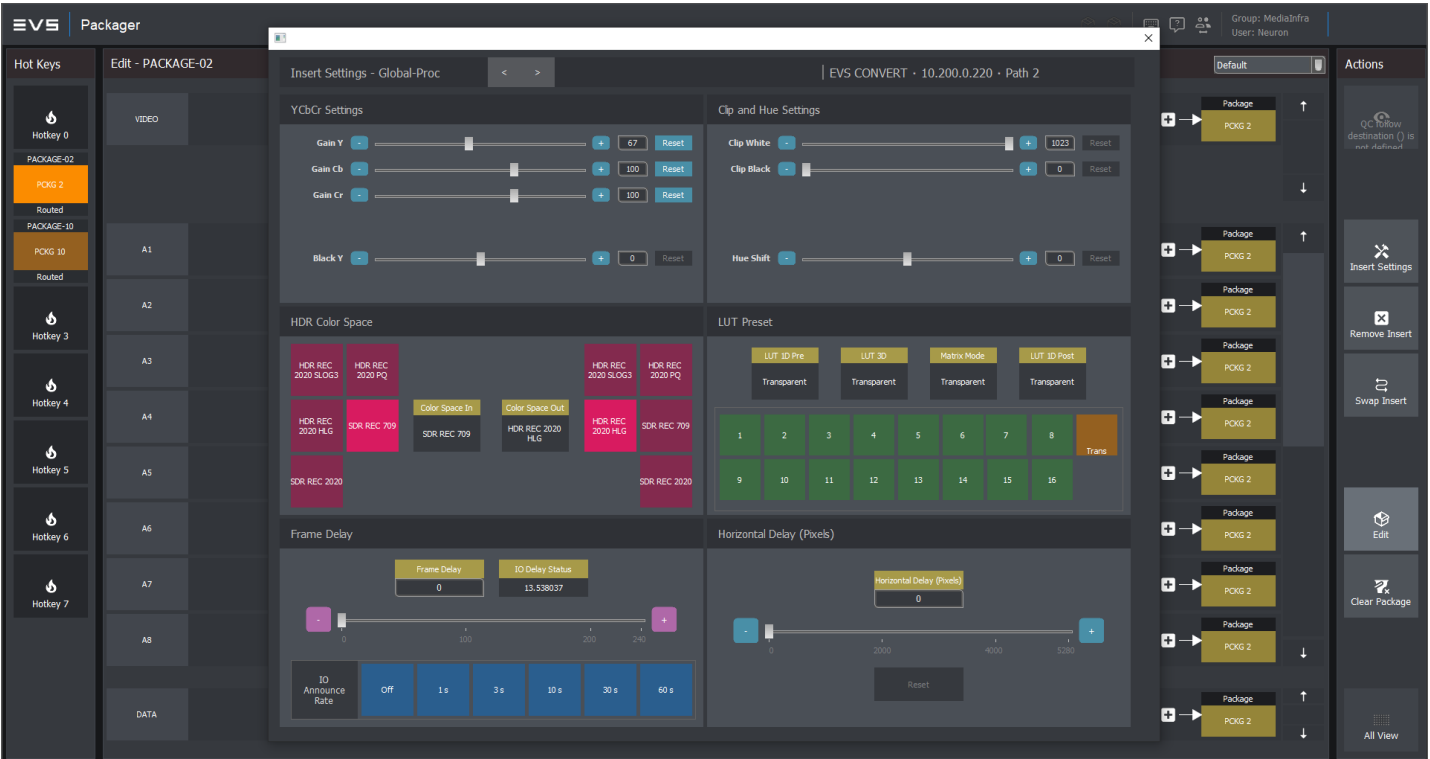
The packager allows you to give your event a custom Icon as well as a start and end time & date which shows using colours at a glance which packages are finished or ready to be used or reused. Each event package can be configured to use any combination of the available audio levels, video levels, inserts and data levels to adjust the virtual source output. Adding and removing processors, delays and audio shuffling becomes easy with Destination Trace visuals.

Inserts

Processors used can also give quick access to the proc controls and settings.

Helpful tools

The alt mnemonic switching is also available here, as well as the Monitor/QC Follow. Packager also includes help-functions to check if a package is in use.



Devices

Monitoring and alarm panels for all your devices



The Devices UI Package allows a complete overview of all devices connected to Cerebrum that you want to monitor. An enhanced version of the native monitoring and alarm system, this panel gives users easy access and clear, selective alerts and information. Devices can be organized into groups allowing you to see only what is relevant in a huge amount of available live data. You can individually define ranges for the alarm status of each object monitored, such as temperature and speed ranges.

The following features and actions can be configured:

- Quick navigation
- Native functionality
- Live Monitoring
- Mask alarms
- System-wide alerts
- Filters
- Control tab
- Device log
- Cerebrum alarm grid



Each function is depending on the (3rd party) devices being controlled. The interfaces presented in this document have been validated in a Strada router configuration and using Neuron as a processing devices

Easy navigation

Sources and Destinations are organized using the **Category** system in Routemaster. This makes adding and configuring alarm devices quick and easy.

Native functionality

The devices UI package utilizes the native **Alarm system** in Cerebrum so the system view alerts will always show the same alarm status as in the panel to avoid confusion.

Live monitoring

Select any live data available to Cerebrum to display in the monitoring panel. For example SNMP mibs can be used to display values for specific **Objects** such as fan speeds and signal status. This is a powerful tool to easily find the information relevant to the user.

Mask alarms

Just as in the native application, this panel allows users to mask alarms to **Good**, **Error** or **Warning** status to allow known problems or expected behaviour to be ignored. Alarms can also be reset here.

System-wide alerts

There is an option to show alarms in the **Header bar**, no matter which panel the user has loaded. This provides confidence that all is well with your system without checking the devices panel.

Filters

The top of the panel allows an overview of all devices which can be filtered by **Live** status or **Latched**, to show recent status. There is also an option to view **Filtered** device groups to hide any groups in a Good status.

Control tab

Gain easy access to your **Device control** interface when an alarm is triggered to aid further investigation without having to navigate to the device in question.

Device log

The log is a place to leave notes about a specific device. These **Text Notes** can be arranged in groups such as instructions, known issues or firmware version upgrade details. The log provides an easy place to access all of these user notes.

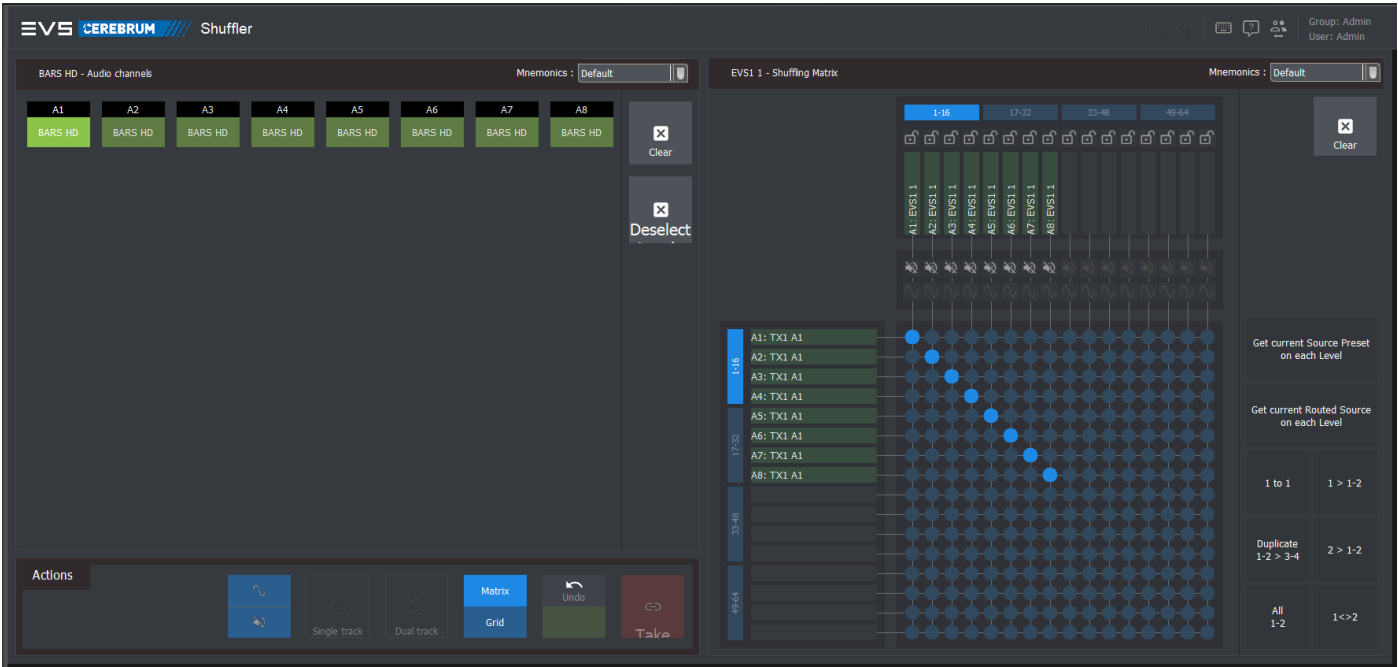
Cerebrum alarm grid

Here you can also easily access the native Cerebrum **Alarm event log** for the selected device without having to navigate away from the devices panel.



Shuffler

Manage routing thousands of audio channels



The Shuffle panel allows you to quickly and easily manage and shuffle thousands of audio channels .

Views

Users can toggle between Grid view which shows each level of a selected destination on separate buttons and Matrix view where a graphical representation allows for crosspoints by selecting dots in a matrix. Whilst in this mode there are also configurable presets available for speed, such as 1 to 1 and All 1-2.

Speed tools

There are designated buttons for Silence and Tone sources so these can be routed quickly to any destination. The Undo and Alt Mnemonics switching is also available on this panel. Users will also find 'Select all levels' here just as in XY Mode. Dual track mode makes routing stereo pairs easy

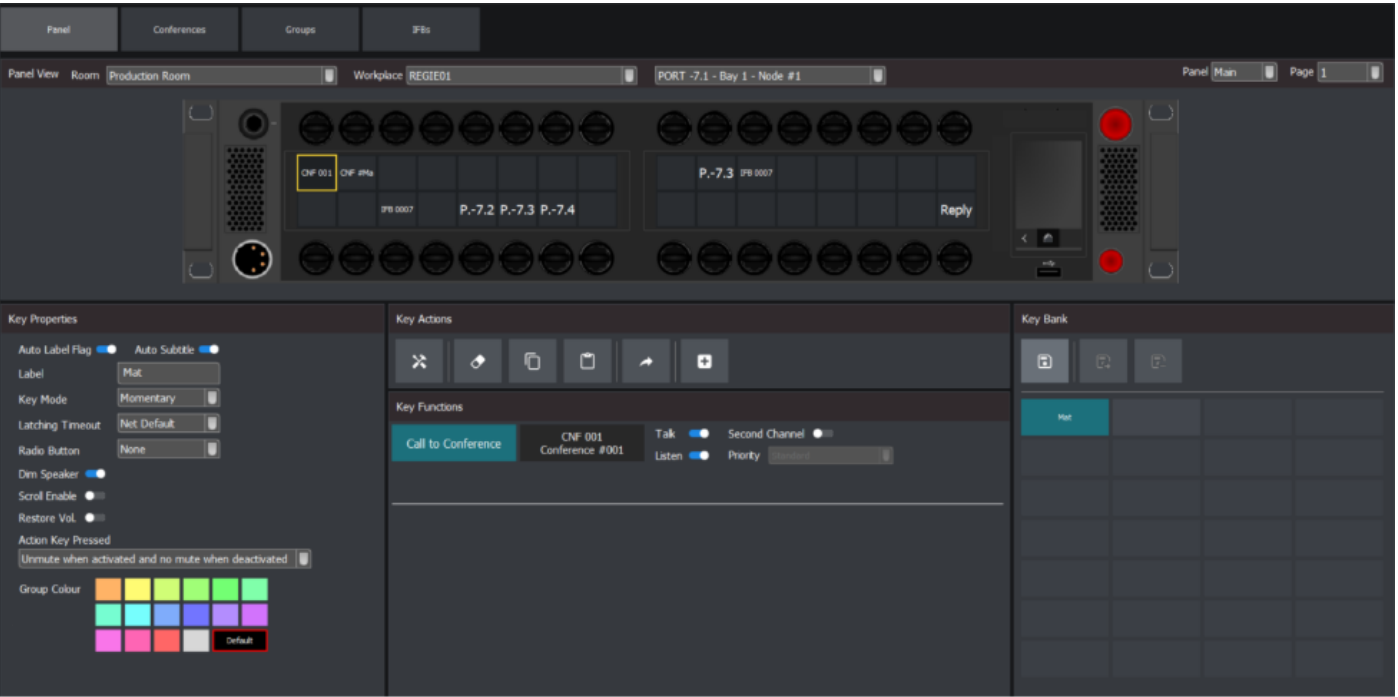
Locking

This panel supports 64 audio levels. Users have single/ or dual track selection available as well as optional color coding of sources to make visual overviews easier to follow quickly.

⚠ Each function is depending on the (3rd party) devices being controlled. The interface presented in this document have been validated in a Strada router configuration and using Neuron as a processing devices

Intercom

Integrated intercom management



Configure your Riedel Artist intercom panels using this easy UI with multiple functions including a Key Bank to store key properties and functions for later use. This is an additional feature not available in Ridel Director.

Keys

Multiple settings for individual keys including latching behaviour, labels and scrolling. Keys can also be copied and pasted between panels for a fast setup. Manage the functions for each key.

Conference

View all the conferences in the system and click on one to see further details such as all 'Talk' and 'Listen' members.

Groups

View all the groups in the system and select one to see all the 'Talk' and 'Listen' members. Members can also be added or deleted here.

IFBs

View all the IFBs in your system and select one to edit the labels, input and output ports as well as the mix-minus source and volume.

⚠ The Intercom UI Package is limited to only work with Riedel Artist systems. It requires RRCS for communication between Riedel and Cerebrum.



Proc Control

Processing device control, simplified



Control and monitor all your processing devices (procs) with asset/resource navigation, favorites, and auto mode for streamlined workflows. Driven by the Resource Manager, the modular design of this UI gives a highly customizable space for fast access to the settings you need to hand.

Favourites

When defining a proc as g your favourite modules for fast access.

Auto mode

In auto mode if a proc is set to a specific function such as colour settings only the relevant settings will be shown filtering out all the settings you don't wish to change.

CTP

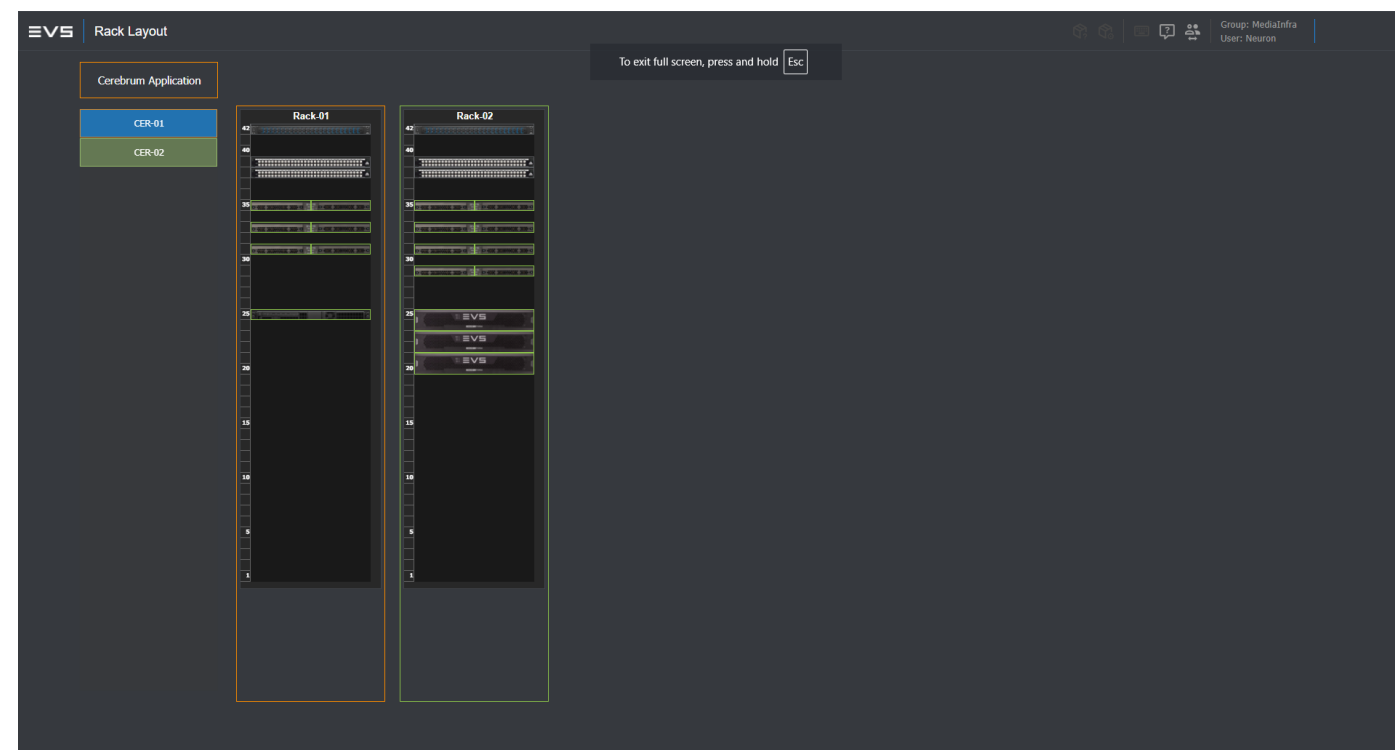
This package is also available for the CTP touch screen panels.



The Proc UI Package is limited to only work with Neuron Bridge, Neuron Convert and Imagine SNP

Rack Layout

Visualize and manage your equipment



The Rack Layout Package offers a live, interactive view of your equipment racks, rooms, and devices. Instantly see device status and drill down for more information.

Overview

Configure all your racks for a fast overview of how your system is running and any alarms that require attention. The graphical layout lets you identify where the problem is quickly.

Easy to build

In UI Framework select your racks and add your unit heights along with labels and images for fast identification of your equipment.

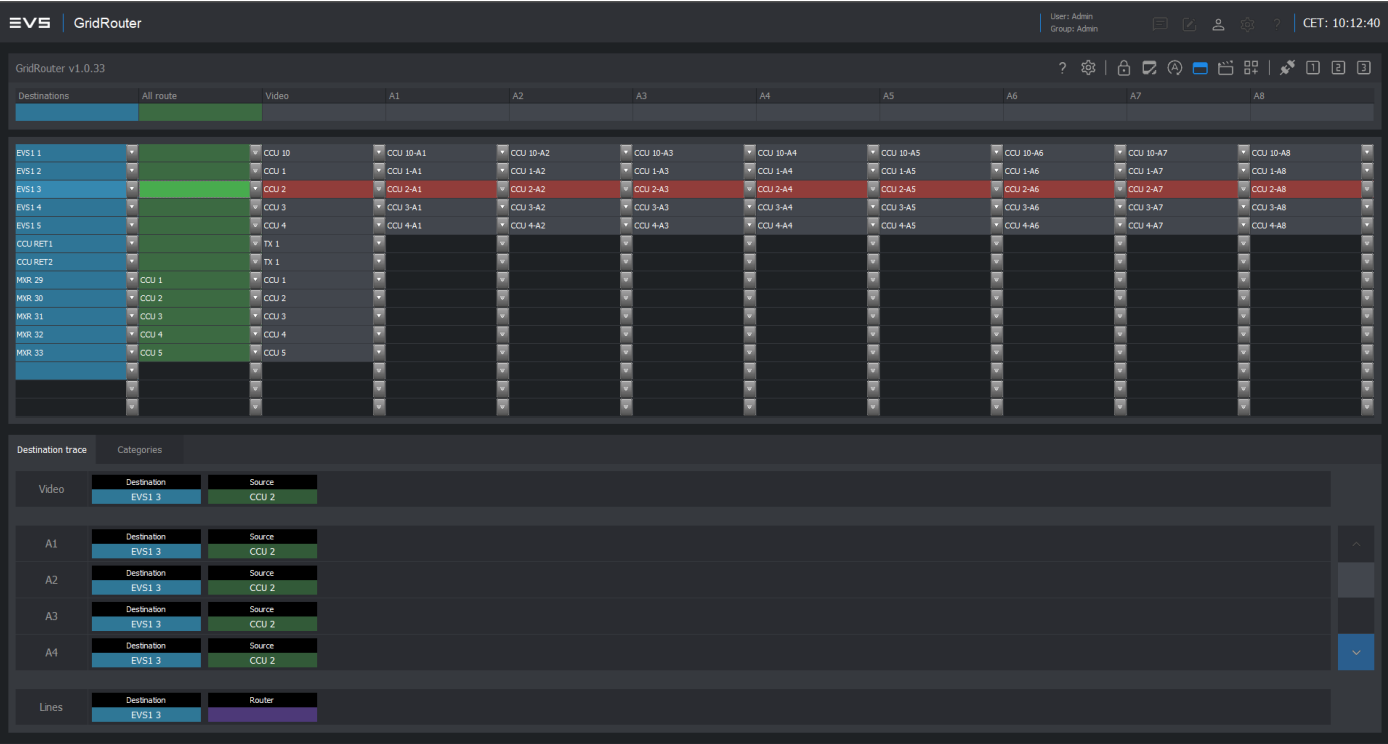
Alarms

You can define what an alarm is for each piece of equipment so you only get notified of the relevant status



Grid Router

Efficient grid-based routing



Designed for environments with large numbers of destinations and levels, the Grid Router Package offers fast navigation, advanced filtering, and powerful copy/paste tools.

Shortcut keys

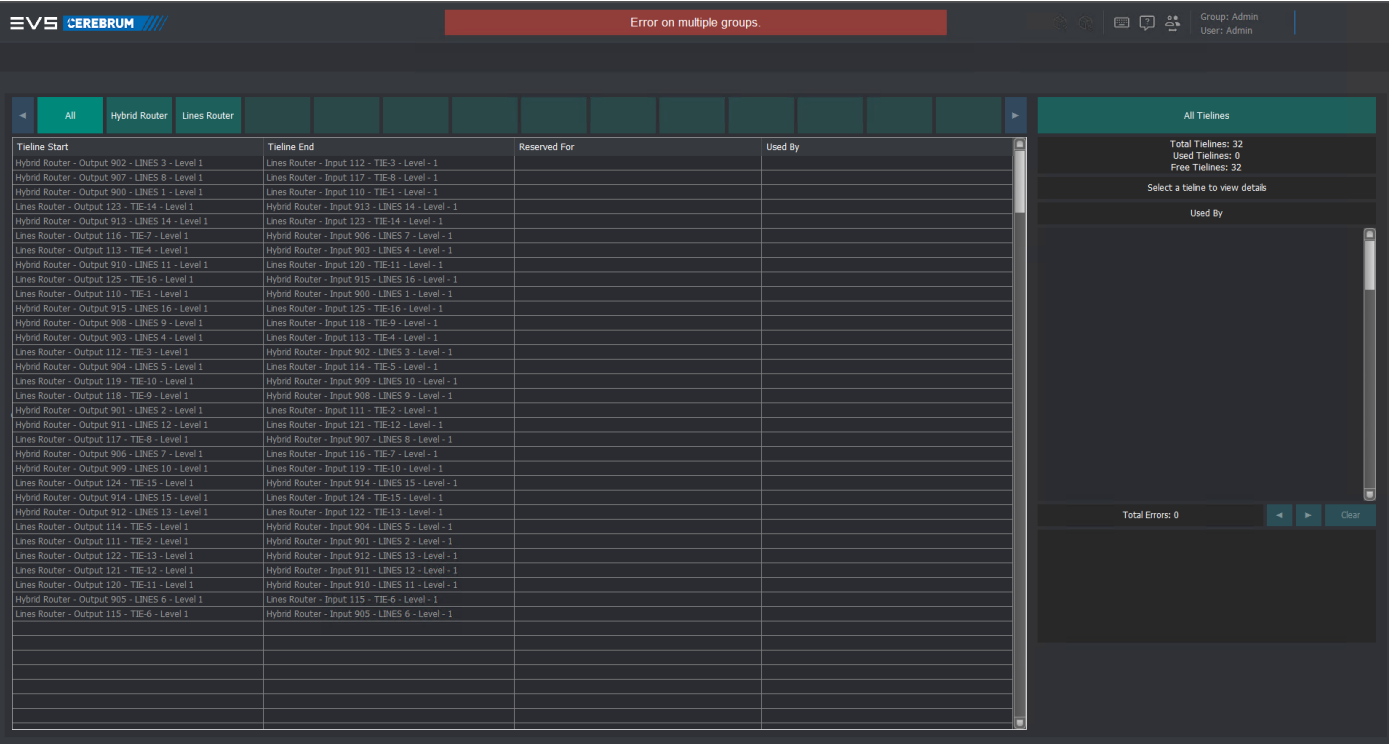
Fly around the UI with helpful shortcuts always accessible from the header bar icons and keyboard. Copy and paste around the grid to make incremental routing fast.

Modes:

- Toggle between preset and direct take
- Show all destinations or make your own list to view
- Optional breakaway source view
- View IO mnemonics or switch between alt mnemonics
- Extended mode offers category views as well as destination trace per level

Tieline Package

Tieline management at a glance



Monitor and manage tieline connections, status, and errors across your system. The Tieline Package provides real-time insights and device filtering. A UI for keeping track of your tieline resources making each one traceable as well as a quick glance overview of the number of tielines currently in use and the destinations using them.

Filter

Filter all views per device.

Reserved status

Quickly see whether a tieline has been reserved or not.

Alerts

Keep track of tieline errors with a macro that keeps track of the errors.



Salvo Package

Preset Routing, Made Simple



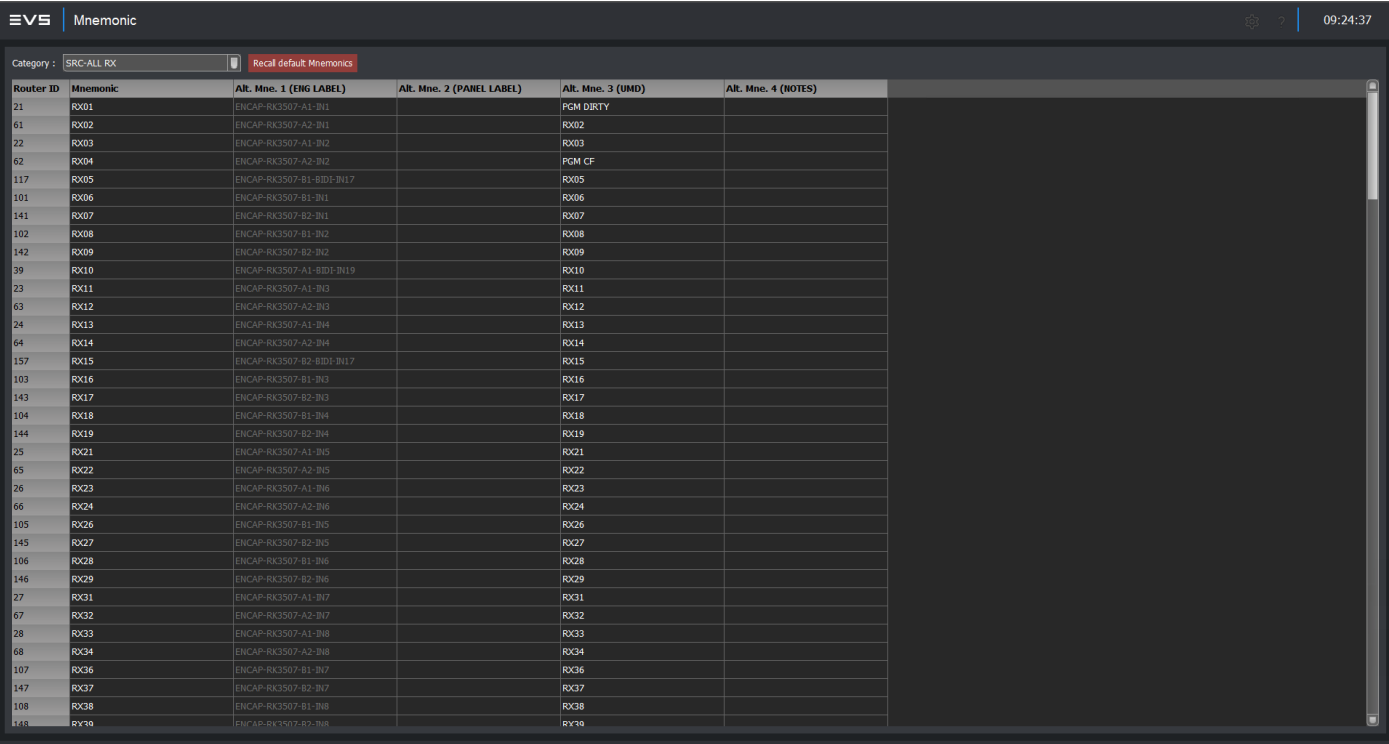
Create, edit, and trigger salvos (preset routes) with an intuitive grid interface. The Salvo Editor Package makes complex routing changes quick and reliable. A sleek UI overview of your salvos where you can create, edit and rename salvos in your system. Supports router crosspoints, device object sets, and source and destination alternate mnemonics. Operators can also view/fire salvos from here without having to access the Tally and Router Configuration part of Cerebrum.

Key features:

- Menu bar and grid editing
- Lock state, rename, save, and fire salvos
- Easy salvo management

Mnemonics Editor

Effortless Label Management



Edit and recall mnemonics for sources and destinations directly from the UI. The Mnemonics Editor Package streamlines label management and integrates with salvos for quick recall. Simply select a category to start editing mnemonics directly from the UI. Easy visual navigation of the alternate mnemonics with instant editing. Allows operators such as directors to change the UMD labels on the monitor stack for camera operators, or a vision mixer to change their button labels.

Key features:

- Category selection and alternate mnemonic editing
- Recall defaults and salvo integration

Click here to contact us for more information or to book a demo



© 2026 EVS Broadcast Equipment,
all rights reserved.

EVS is globally recognized as the leader in live video technology for broadcast and new media productions. Our passion and purpose are to help our clients craft immersive stories that trigger the best return on emotion. Through a wide range of products and solutions, we help deliver the most gripping live sports images, buzzing entertainment shows and breaking news content to millions of viewers every day – and in real-time.

→ evs.com

[in](#)

[f](#)

[t](#)

[@](#)