



TRAINING

OPERATORS PRONEWS

LIVE PAM
PACKAGE 15.00

AUGUST 2016



TABLE OF CONTENTS

1.	INTRODUCTION.....	2
2.	IPDIRECTOR 07.10	3
2.1.	Archive Module	3
2.2.	Restore Functionality From Nearline	4
2.3.	Ingest API Support	4
2.4.	Other Enhancements	4
3.	INGEST FUNNEL 1.2.....	5
3.1.	Introduction	5
3.2.	New Ingest Sources	5
3.3.	Storyboards	5
3.4.	BPM Activities	6
4.	SOFTWARE DOWNLOADS AND MANUALS	6

1. INTRODUCTION

IPDirector

The latest release of IPDirector (07.10.28) includes a number of new features and improvements. The most notable addition is a new IPDirector Archive Module, which enables **archive** and **restore** operations directly from IPDirector.

As well as being able to archive using the straightforward tools in IPDirector, Restore functionality is also enhanced, giving new options to make archive material available more quickly and transparently.

Enhanced automation of **ingest tasks** is now possible, using new API support to improve on previous XML-based workflows.

Ingest Funnel

The latest release of Ingest Funnel builds on the launch features, adding possible ingest sources and providing more flexibility when selecting and ingesting media.

New Features:

- > Additional ingest sources, including latest GoPro cameras
- > Automatic mounting of ENG cards and HDD's with ENG file/folder structure
- > Possibility to create, reorder and play clip storyboards and add metadata when ingesting

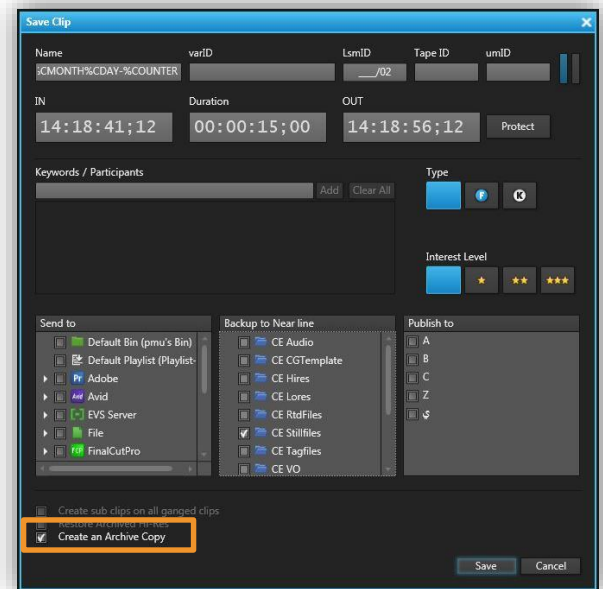
2. IPDIRECTOR 07.10

This section describes the new operational features that have been included in the latest release of IPDirector.



2.1. ARCHIVE MODULE

The new IPDirector Archive Module now makes it possible to carry out various archive and restore functions of nearline files from within IPDirector – using a third party Hierarchical Storage Management system (HSM).


Both Hi and Lo-Res files can be archived directly from Database Explorer, using the contextual menu. It's also possible to send clips to archive by ticking the box in the Save Clip window, or by creating a Bin Rule and ticking the box to Create an Archive Copy of any file landing in the Bin.



Once the file(s) have been archived on the HSM, the icon for the archived file clip element will appear in the Clip Element column of the Elements grid:

-  high resolution file
-  low resolution file.

Files with an **Archidel** status – meaning they've been archived by the HSM and deleted from the nearline (displayed in italic in the Database Explorer) – can be restored to the nearline later if required. The restore task is triggered by right-clicking on the Archidel file in Database Explorer and selecting **Restore from Archive**. At this point you can select the original nearline, or an alternative.

Name	Clip Elem...	LSM ID	Status	Prote...	TC		
pmu-0322*							
pmu-0322-0670					14:19:57:29		
Elem...	Name	LSM ID	Hi-Lo	Status	Archive	Protected	TCIN
File	pmu-0322-0670	135G/02	H				14:19:57:29
File	pmu-0322-0670	135G/02	L				14:19:57:29

Similarly, using the Archive Module, clips can be restored from the archive – either from Database Explorer, or from a Control Panel. Full Restore is always available, but partial or “short” restores of clips will depend upon the HSM and codec(s) being used.

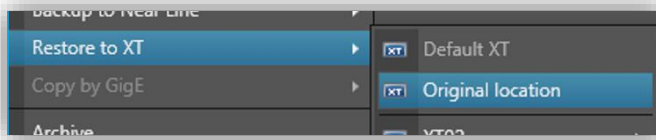
The IPDirector Archive module is only available on new archive installations, but it is worth noting that the IP2Archive solution is still supported. The new Archive Module simplifies many tasks which would previously have been carried out in IP2Archive, but where prioritization of archive jobs and/or approval tasks need to be carried out, IP2Archive is the best fit.

2.2. RESTORE FUNCTIONALITY FROM NEARLINE

Restore functionality is enhanced in the latest update to IPDirector.

> Restore to Original Location

It is now possible to restore IPDirector clips to their original XT server location – helping operators to quickly access familiar clips. This is accessed via a new option in the Database Explorer contextual menu – **Restore to XT > Original Location**. A warning message will indicate if the original location is already occupied.



> Automatic Restore

Automatic Restore functionality is now also available in IPDirector. When a file only asset is loaded on a Control Panel which is linked to a server PGM channel, a restore process will be automatically triggered. As this process is faster than real-time, the clip is ready to play out as soon as the first frame has been restored.

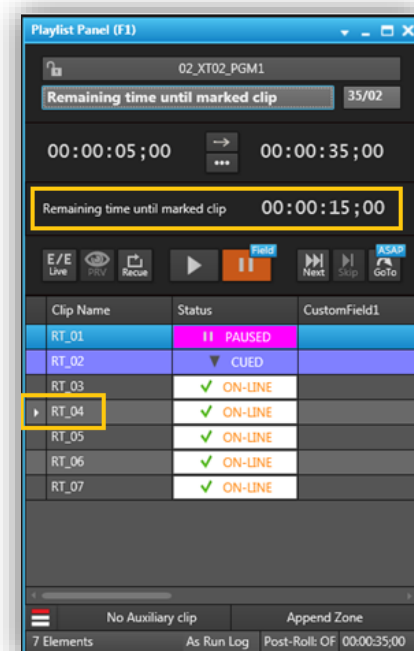
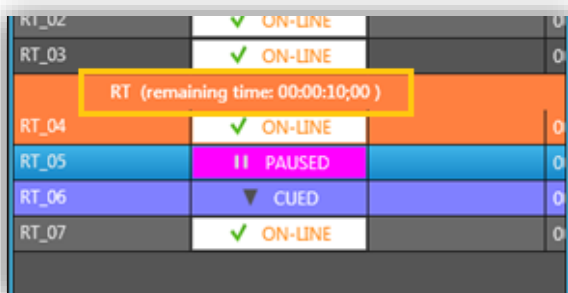
2.3. INGEST API SUPPORT

IPDirector now has API support for ingest, allowing more flexible automation and scheduling of ingest jobs. Previously, Ingest Scheduler relied on an XML-based workflow for these types of operations, but there were limitations in the kinds of ingests that could be scheduled and reporting back on the statuses of ingest jobs. With the new API support, there is far more flexibility and transparency when scheduling jobs. Ingests can be created, deleted or updated, and can ingest on XT servers, stream, or both. It is also possible to get accurate reporting on the status of scheduled ingests.

2.4. OTHER ENHANCEMENTS

There are a range of other enhancements to IPDirector, including:

- > Playlist improvements to simplify operation
 - > Remaining time indication in the playlist panel - up to a specific element in the playlist
 - > Remaining time indication for a group of elements:



- > Enhancements to the Melt workflow to minimize the number of assets on the archive
- > Improvement to router control (possibility of locking) when the record is started

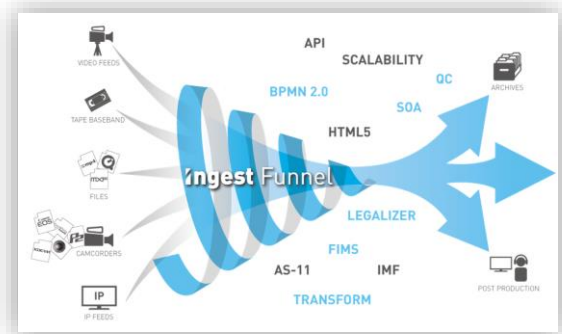
For additional information you can refer to the [User Manual](#) and [Release Note](#) on the EVS Website.

3. INGEST FUNNEL 1.2

3.1. INTRODUCTION

Ingest Funnel is an EVS solution which aims to streamline ingest processing workflows in environments where operators are having to deal with multiple types of media and file formats.

The principle is that all media can be placed “in the top of the funnel”, and will emerge analyzed, legalized and transformed into whatever format is required for subsequent workflows.



3.2. NEW INGEST SOURCES

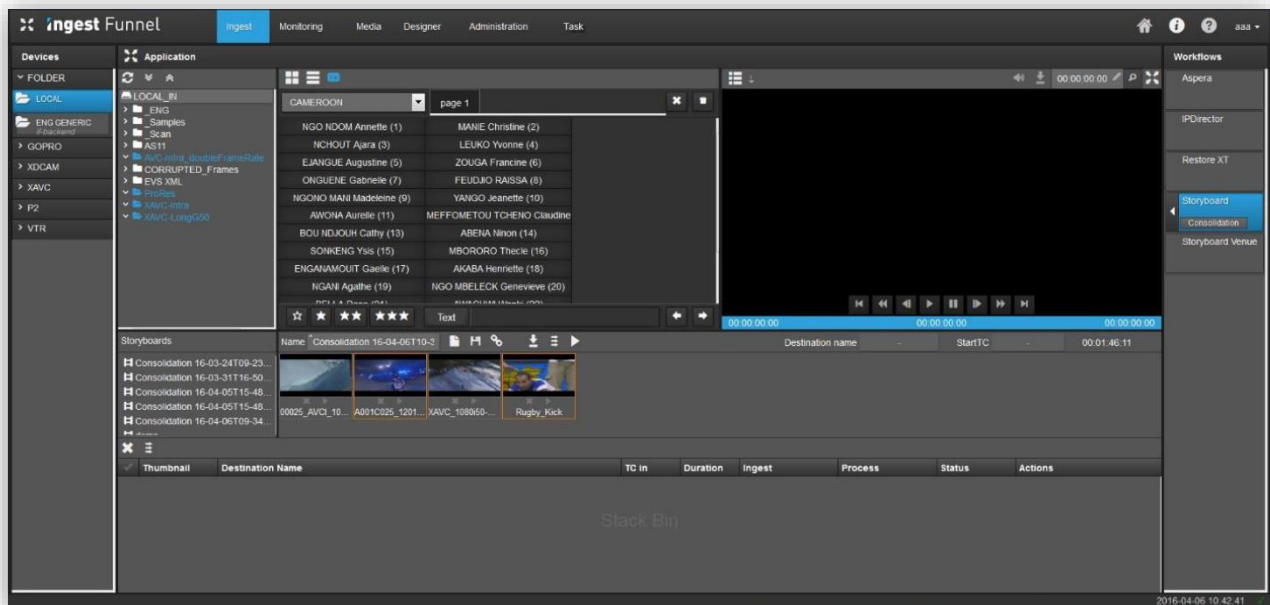
It is obviously important that Ingest Funnel keeps up to date with the latest cameras and file formats, in order to support as many as possible.

Ingest Funnel 1.2 adds support for **Go Pro Hero 4 Black/Silver** and **Arri Amira**.

ENG cards are now automatically mounted in Ingest Funnel as source devices. **HDDs** are also automatically mounted if they have an ENG device file and folder structure.

3.3. STORYBOARDS

The new layout in Ingest Funnel 1.2 enables you to create, reorder and play **storyboards** and tag them with metadata, using keyword grids and tools familiar from other EVS products.

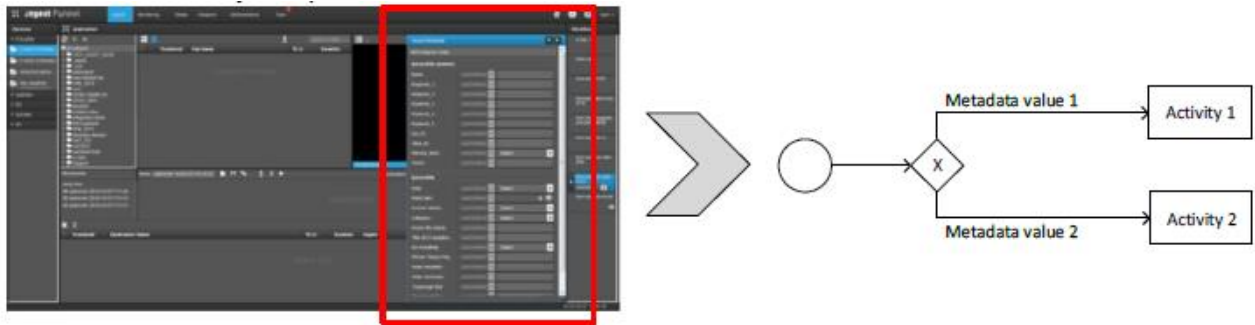


This enables media to be selected and analyzed before it has even been ingested. Once you are happy with the clips and metadata you have selected, these can then be ingested – saving time and making sure that appropriate information travels with the media through your broadcast workflow.

3.4. BPM ACTIVITIES

It is now possible via Xsquare to restore to **EVS XT/XS Servers as destinations** when the EVS Server is nominated as a “worker” in the admin section. In the Xsquare template, the destination type must be set to “EVS Server”.

Additionally, when using an ingest/transform workflow which depends upon “choice conditions” to define the actions or processes carried out on an incoming file, **metadata added by the operator** can now be used as a source for those choice conditions.



For additional information you can refer to the [User Manual](#) and [Release Note](#) on the EVS Website.

4. SOFTWARE DOWNLOADS AND MANUALS

Refer to the [Download Page of the EVS Website](#) and the Technical area for manuals, release notes and software packages to download.