



TRAINING

**OPERATORS PRONEWS**  
EVS VIDEO SERVERS SYSTEM & SOFTWARE  
PACKAGE 15.00

AUGUST 2016



## TABLE OF CONTENT

1.	INTRODUCTION.....	2
2.	NEW OPERATIONAL FEATURES OF MULTICAM 15.00 .....	3
2.1.	New Multiviewer	3
2.2.	Operational settings	3
2.3.	Dual LSM Improvements	4
2.4.	Dual LSM – Individual Operational parameters	4
3.	NEW ENGINEERING FEATURES IN MULTICAM 15.00.....	5
3.1.	internal multiviewer	5
3.2.	PC Lan redundancy	6
3.3.	New Configurations with Multicam 15	6
4.	XNET MONITOR.....	6
4.1.	Introduction	6
4.2.	Network information	7
4.3.	Add host based on hostnames	7
5.	SOFTWARE DOWNLOADS AND MANUALS .....	7

---

## 1. INTRODUCTION

This newsletter details the latest features and functionality of Multicam version 15.00

### New Operational features

A key new feature introduced with Multicam 15.00 is **Multiviewer** that now includes tally support, up to 4 individual Multiviewer outputs and 2 external inputs.

More operational settings are added in Multicam 15.00, to **Cue Points, Sort-TC, SLSM Clips** and the **Loop Button**.

The **Dual-LSM** function has also been enhanced with:

- > SLSM Support – 2x and 3x Cameras
- > Support for up to 5 remotes

### New Engineering features

Key engineering features of the new release include:

- > PC LAN redundancy – Including DHCP functionality
- > Support of TSL 5.0 for UMD and Tally

### XNet Monitor

Key features include:

- > Network information about the PC LAN and GbE connections on the server
- > Add hosts based on hostname

## 2. NEW OPERATIONAL FEATURES OF MULTICAM 15.00

### 2.1. NEW MULTIVIEWER

The internal multiviewer has been refreshed, with a new design which optimizes the display of information. Tally support is integrated – with support for three different colors. Tally indications are displayed via highlights at the edge of screen or rectangles at the bottom left and right.

Up to 4 individual multiviewers can be defined, that can include all the signals used by the server and up to 2 additional external sources such as the On Air signal or other signals for viewing purposes.



### 2.2. OPERATIONAL SETTINGS

#### > Freeze on Cue Points

Freeze on Cue points can now be individually activated for Record Trains and/or Clips.

#### > SLSM clips

SLSM clips in a playlist can now be added in native speed, to ensure the best quality when playing back the playlist. This can be enabled or disabled.

#### > Loop Button

The Loop Button on the LSM Remote can now be configured to trigger different behaviors, apart from the standard Internal Loop. It can now also be set to produce the following actions:

- > Loop Clip – will loop the clip on the channel you have selected
- > Loop Clip Bounce – will bounce the clip on the channel you have selected
- > Disable – will disable the button

#### > Sort-TC Improvements

- > When a Sort-TC search is performed, browsing a specific clip on that search and then re-activating the Sort-TC now brings you back to the most recent result you were on.
- > In previous versions the Sort-TC would bring you back to the first result of the search.

## 2.3. DUAL LSM IMPROVEMENTS

- > New **configurations** with SLSM :
  - > SLSM 2x
  - > SLSM 2x 3G
  - > SLSM 3x
  
- > More individual parameters in the operational settings, so there is less conflict when operating with 2 operators on one machine.
  
- > Support for up to 5 LSM remotes, shared between the 2 operators.
  - > Generally this would be configured with 2 remotes per operator, with the 5<sup>th</sup> remote being used additionally to control a hyper-motion camera.
  
- > **Hypermotion** camera control is available for the second operator on his second remote.



## 2.4. DUAL LSM – INDIVIDUAL OPERATIONAL PARAMETERS

Each operator has access through their remote to their own personal settings.

Here's an overview of the individual parameters for operator 1 - operator 2 has exactly the same options.

**Operator 1**

---

**Clips**

Automake clip for CAM:  A  B  C  D  E  F  G  H

Guardbands:  s  fr

Default clip duration:  m  s  fr

Autoname clips:

Mark cue points:

Freeze on cue points:

---

**Playlist**

Video effect duration:  s  fr

Audio locked to video:

Audio effect duration:  s  fr

Default playlist speed:

Insert in playlist:

Insert SLSM native speed:

Advanced audio editing:

Extend split transition:

Playlist loop:

Load playlist:

---

**Protection**

Confirm delete clips/playlist:

---

**Evs controller**

Effect duration for take:  s  fr

Lever engage mode:

Second lever range:

Recall clip toggle:

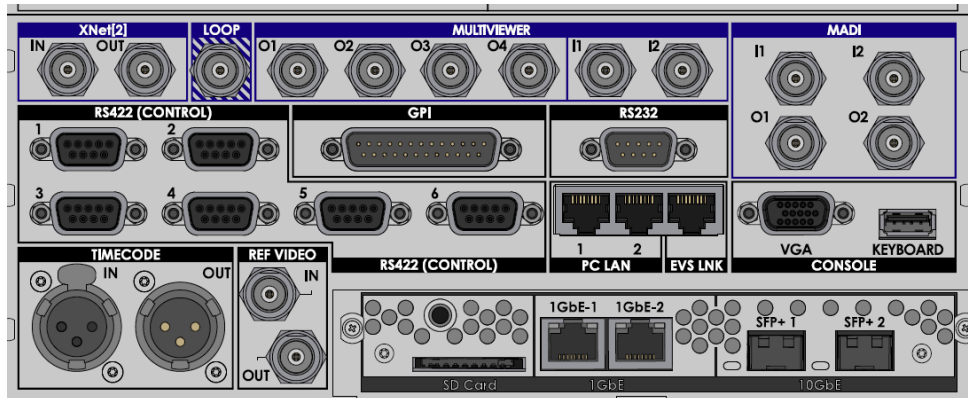
Browse button:

Loop button:

### 3. NEW ENGINEERING FEATURES IN MULTICAM 15.00

#### 3.1. INTERNAL MULTIVIEWER

- > With the latest backpanel (with the MV4 Multiviewer hardware), it is now possible to have up to 4 individual Multiviewers.
- > As the backpanel also contains Multiviewer inputs, there can be up to 2 external signals added to the Multiviewer layouts.



- > The TSL protocol will communicate through the PC LAN port and will pass the Tally information - indicated in the 3 different Tally colors that are available.
- > The UMD information from the TSL protocol can also be used - depending on the settings of the Multiviewer. For instance, when routing a different source, the name of the recorder will change accordingly.



Tally/UMD			
Protocol:		TSL 5.0	
		UMD O/W	Display Index
OUT1	PGM1	<input checked="" type="checkbox"/>	0
OUT2	PGM2	<input checked="" type="checkbox"/>	1
OUT3	PGM3	<input checked="" type="checkbox"/>	2
OUT4	PGM4	<input checked="" type="checkbox"/>	3
IN1	REC1	<input checked="" type="checkbox"/>	4
IN2	REC2	<input checked="" type="checkbox"/>	5
IN3	REC3	<input checked="" type="checkbox"/>	6
IN4	REC4	<input checked="" type="checkbox"/>	7
IN5	REC5	<input checked="" type="checkbox"/>	8
IN6	REC6	<input checked="" type="checkbox"/>	9
IN7	REC7	<input checked="" type="checkbox"/>	10
IN8	REC8	<input checked="" type="checkbox"/>	11

Enable Disable UMD O/W for all channels

### 3.2. PC LAN REDUNDANCY

To add redundancy to the Management connection of the EVS Server, both PC LAN connections can now be connected.

- > The config for this redundancy is a static redundancy, not LACP - compared to the teaming of the GbE connections on the TGE board.

```

PC Lan :
Redundancy      ON
Hostname        MyServer
PC Lan #1
DHCP            OFF
IP Address      010.129.150.018
Subnet Mask     255.255.255.000
Default Gateway 010.129.150.254

Enter : Apply configuration
Esc   : Exit without saving
    
```

Another add-on on the PC LAN is the ability to switch the port to DHCP so an IP address is assigned automatically.

- > The server can be discovered on the network based on the Hostname – which is the same as the facility name configured on the machine, unless differently configured in the PC LAN settings.

### 3.3. NEW CONFIGURATIONS WITH MULTICAM 15

- > There are some new configurations with Super Slomo cameras in **SD/720p/1080i** :
- > And new configurations in **1080p** :

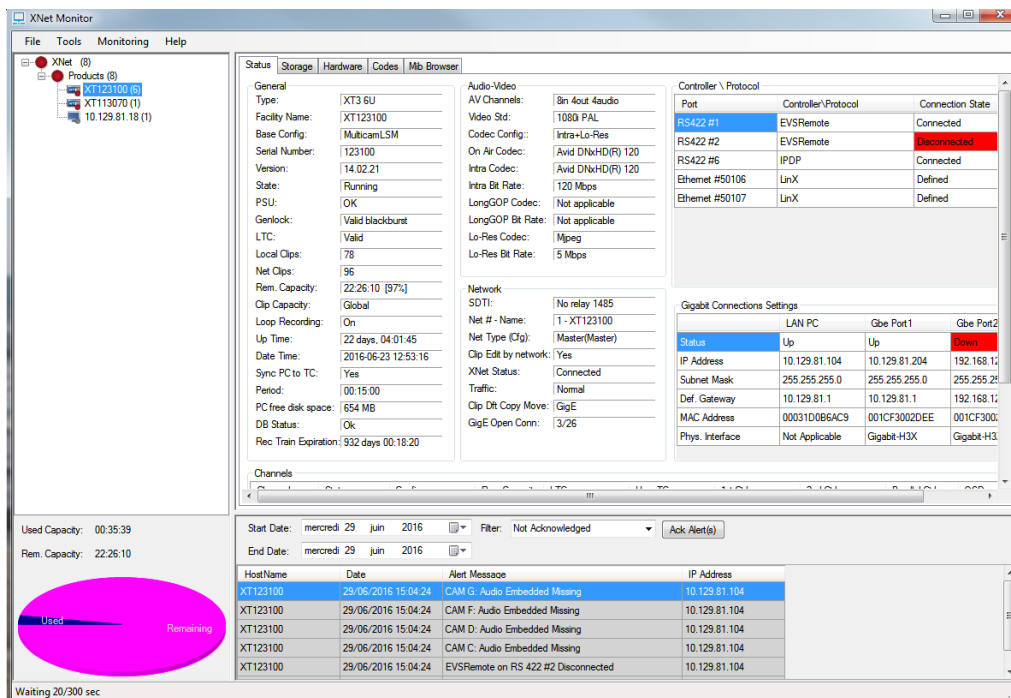
For a complete list of all the supported configurations, please refer to this [page](#).

For new supported configurations please refer to the Configuration Overview page of each server.

## 4. XNET MONITOR

### 4.1. INTRODUCTION

Most of you are familiar with XNet Monitor as a tool for monitoring servers and other EVS hardware. As new features have gradually been implemented on the servers, various statuses on the monitoring side have also changed over time. This will help you as an operator to have a better overview on what is happening with your machines in operation, or during the preparation of a setup.





## 4.2. NETWORK INFORMATION

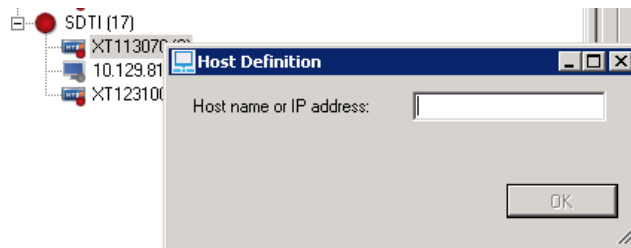
- > **Statuses, if teaming is applied**  
When teaming is used and one or more cables are unplugged, this will be represented in the interface.
- > **LAN PC2**  
This column will be shown when a second PC LAN is used.
- > **Mode**  
2 values are possible, static or DHCP.

	LAN PC1	Gbe Port1	Gbe Port2
Status	Team Up	Team link 2 down	Not present
IP Address	10.129.110.103	10.129.112.103	192.168.12.10
Subnet Mask	255.255.254.0	255.255.255.0	255.255.255.0
Def. Gateway	10.129.111.254	10.129.112.254	192.168.12.1
MAC Address	00031D0A3FD1	001CF30118A5	001CF30118A7
Phys. Interface	Not Applicable	1Gbe on TGE	1Gbe on TGE
Mode	Static	Static	Static

## 4.3. ADD HOST BASED ON HOSTNAMES

As the PC LAN can now be in DHCP, it's not immediately clear which IP the server is receiving. To help with this, you can now also add a host in XNet Monitor based on the Host Name.

- > Keep in mind that this needs a DNS mechanism on the network.



## 5. SOFTWARE DOWNLOADS AND MANUALS

Refer to the [Download Page of the EVS Website](#) and the Technical area for manuals, release notes and software packages to download.

If you don't already have an EVS login, you'll be invited to create a personal EVS account, to help ensure that you're kept up to date with only the most relevant information and updates. This will also allow you to download all the information you need, completely free of charge