



TRAINING

OPERATORS PRONEWS
EVS PRODUCTION SERVERS
PACKAGE 16.2

AUGUST 2019



TABLE OF CONTENTS

1. INTRODUCTION	2
2. XT-VIA	3
2.1. Multiviewer – MV4X	3
2.2. New Supermotion Configs in HD and UHD-4K	3
2.3. Evolution of the UHD-4K Upscaling Function	4
2.4. UHD-8K Edition	4
3. XT-NANO	5
3.1. New Supermotion Configs in HD	5
4. XNET-VIA / XHUB-VIA	5
5. LIVEIP IMPROVEMENTS	5
6. SOFTWARE DOWNLOADS AND MANUALS	5

1. INTRODUCTION

This newsletter details the latest features and functionality of Multicam version 16.2.

In this version, the power of XT-Via hardware is further extended and new capabilities like resolution mixing on one server and very high-bitrate configs become available.

Multiviewer MV4X

With XT/XS-VIA and the new MV4X multiviewer, new layouts are available and IP outs have been activated. A UHD-4K input is also available for monitoring of the main program.

More Super Motion Support in HD and UHD-4K

New Super Slow Motion 1080p configurations have been added on the XT-VIA servers.

Evolution of the UHD-4K upscaling function

Now, the XT-VIA can run “mixed” configurations that allow ingest in 1080p, while the output program is upscaled in UHD-4K.

UHD-8K

From this Multicam version onwards, the 8K software version is also supported by a special 8K hardware edition.

XNet-VIA

The new easy to deploy IP network architecture of the servers enables a network that is three times as fast as with the XNet-SDTI. This includes some new settings to make it easier for servers/trucks to come online or go offline.

LiveIP improvements

UHD-4K video is now streamed in one single (full raster) IP flow, and ancillary data is now supported.

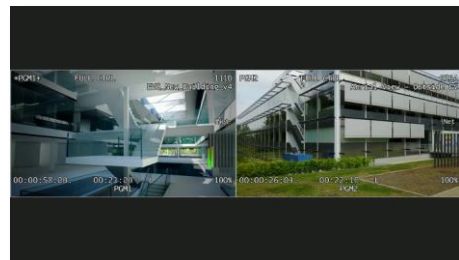
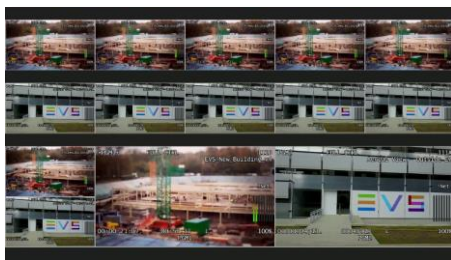
2. XT-VIA

2.1. MULTIVIEWER – MV4X

The new MV4X multiviewer allows 8 new layouts, bringing the total number to 13. The maximum number of images per layout is now 14.

New available layouts:

- 2 (1+1)
- 6 (3+2+1)
- 6 (3+1+2)
- 10 (4+3+3)
- 10 (4+4+2)
- 12 (4+4+4)
- 12 (5+5+2)
- 14 (5+5+3+1)



This new Multiviewer, that replaces the previous MV4 on new hardware, has its outputs now activated on IP. From the LiveIP interface, a multicast ST-2110-20 video IP flow can be configured for each of the 4 multiviewers.

This means full IP integration of the XT/XS-VIA is now possible, including clear monitoring of IP I/O channels and video synchronisation by PTP.



Monitoring the main program in UHD-4K is now possible. A UHD-4K multiviewer input (only supported with 12G-SDI) is available.

2.2 NEW SUPERMOTION CONFIGS IN HD AND UHD-4K

New Super Slow Motion configurations have been added on the XT-VIA servers to bring the count up to 16+ channels:



HD 1080i/720p

- 8 SLSM 2x + 4 OUT
- 6 SLSM 2x + 2 IN + 4 OUT
- 2 SLSM 6x + 2 IN + 2 OUT
- 2 SLSM 8x + 2 OUT
- 2 SLSM 8x + 1 IN + 2 OUT

HD 1080p

- 2 SLSM 4x + 6 IN + 2 OUT
- 2 SLSM 6x + 2 IN + 2 OUT
- 2 SLSM 8x + 2 IN + 1 OUT
- 2 SLSM 8x + 1 IN + 2 OUT

UHD-4K

- 1 SLSM 3x + 0 IN + 0 OUT
- 1 SLSM 3x + 0 IN + 1 OUT
- 1 SLSM 3x + 1 IN + 1 OUT
- 1 SLSM 3x + 2 IN + 1 OUT
- 1 SLSM 3x + 0 IN + 2 OUT
- 1 SLSM 3x + 1 IN + 2 OUT
- 1 SLSM 3x + 0 IN + 3 OUT

2.3 EVOLUTION OF THE UHD-4K UPSCALING FUNCTION

Now, the XT-VIA can run “mixed” configurations that allow ingest in 1080p, while the output program is upscaled in UHD-4K. This is even possible when content is located on another server on the XNet-VIA Network. Below you can see the supported configurations:

HD 1080p (IN) – UHD-4K (OUT)

Regular configurations

- 2/4/6/8 IN + 2 OUT
- 2/4/6 IN + 3 OUT
- 2/4 IN + 4 OUT

Super Slow Motion configurations

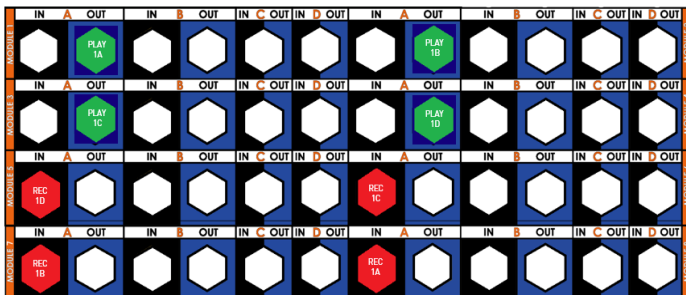
- 1/2 SLSM 3x + 1 IN + 2 OUT
- 1/2 SLSM 3x + 3 IN + 2 OUT
- 2 SLSM 3x + 2 IN + 2 OUT
- 2 SLSM 3x + 4 IN + 2 OUT
- 1 SLSM 6x + 1/2/3 IN + 2 OUT



2.4 UHD-8K EDITION

A special hardware edition allows the XT-VIA server to run in UHD-8K definition. This works in a single 1 IN + 1 OUT configuration.

The wiring needs 4x SDI-12G connections per channel. This mode is only available in SDI (no IP). Also note that 8 video codec modules V4X are used in this version (instead of 7). For that reason, the MV4 multiviewer remains active in this hardware version.



3. XT-NANO

3.1. NEW SUPERMOTION CONFIGS IN HD

New Super Slow Motion configurations have been added on the XT-Nano servers:

HD 1080i / 720p

- 1 SLSM 4x + 2 OUT
- 1 SLSM 4x + 1 IN + 2 OUT
- 1 SLSM 4x + 2 IN + 2 OUT



4. XNET-VIA / XHUB-VIA

The new IP-based XNet-VIA replaces the SDTI Data transfer on SDI cables (XNet). Thanks to the 10 Gbps IP connectors, performance is greatly improved – network establishment is 30 times faster, and the clip transfer and remote playout offer three times the performance of the previous XNet-SDTI.

One external device, the XHub-VIA, is necessary to connect up to 29 XT or XS-VIA (a second device is needed if there are more than 20 servers). The XHub-VIA is now available.

It is of course still possible to use XNet-SDTI to be compatible with XT3 servers v 4.21.



5 LIVEIP IMPROVEMENTS

UHD-4K video doesn't need to be sent or received in a Quad-HD format anymore. Now it is streamed in one single (full raster) IP flow, on one single SFP+ 10G interface. For bandwidth reasons, only frame rates up to 50 fps are supported.

SMPTE ST-2110-40 ancillary data is now supported, for sending and receiving flows. Timecode, and vertical blanking ancillary data (VANC), encoded according to SMPTE 334M, are supported.

6 SOFTWARE DOWNLOADS AND MANUALS

Please refer to the [Support Page of the EVS Website](#) and the Download area for manuals, release notes and software packages to download.

If you don't already have an EVS login, you'll be invited to create a personal EVS account, to help ensure that you're kept up to date with only the most relevant information and updates. This will also allow you to download all the information you need, completely free of charge.