



TRAINING

OPERATORS PRONEWS
UNIFIED PRODUCTION
VERSION 1.4

JANUARY 2020

TABLE OF CONTENTS

1.	INTRODUCTION.....	2
2.	HIGHLIGHT IMPROVEMENTS	3
2.1.	Highlight Editing	3
2.2.	Other Highlight Improvements	3
3.	NEW MISCELLANEOUS FEATURES OF X-ONE 1.4	4
3.1.	Media Library Filters	4
3.2.	New Audio Monitoring	4
3.3.	New Beplay Shortcuts	4
4.	EXTERNAL CONTROLLER.....	5
5.	SOFTWARE DOWNLOADS AND MANUALS	5

1. INTRODUCTION

In the latest software update to the X-One Unified Production system, we have further improved the highlights functionalities. Extra options have now been made available to streamline operations for the operator.

Alongside these highlights improvements, we've also added more Beplay shortcuts, more filtering options in the media library and a new tab for audio monitoring.

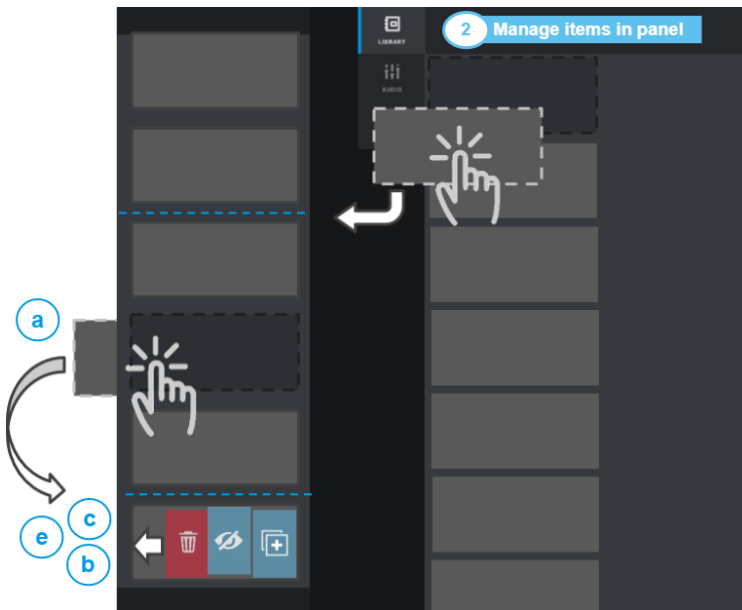
Other updates include: a new small client workstation and support for MIDI controllers enabling a two-operator workflow.



2. HIGHLIGHT IMPROVEMENTS

With the latest updates to X-One, you're no longer limited to one single highlight. As an operator, you can create as many highlights as desired. To create a new highlight, you need to open the Media Library Tab and tap the "+" button in the top right corner. Select the highlight icon in order to create a new highlight.

2.1. HIGHLIGHT EDITING



In the highlights area some basic editing functionalities have been added.

You can reorder (a) clips in a playlist by tapping and holding the desired clip in the playlist panel followed by a drag and drop movement to the new position in the playlist.

By swiping from right to left you can choose to (un)hide a clip (b) so this clip is still present in the playlist but will not be played out on-air.

You can also duplicate a clip in your playlist by clicking on the plus icon (e) in the same menu. Or if you tap on the bin icon (c) your clip will be removed from the playlist.

If you want to add a clip from the media library (2) into your playlist, you need to press and hold the thumbnail of the clip you want to add into your playlist. Next you need to drag and drop the clip to the desired position in the playlist.

2.2. OTHER HIGHLIGHT IMPROVEMENTS

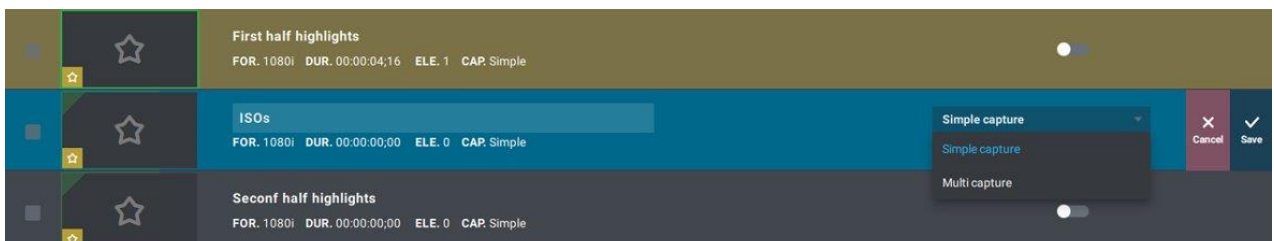
You can edit your highlight settings by swiping from right to left on the highlight bar in the media library.



By tapping Clear you will clear all clips in your playlist, making it able to start with an empty playlist.

By tapping Delete you will delete your playlist from the Media Library.

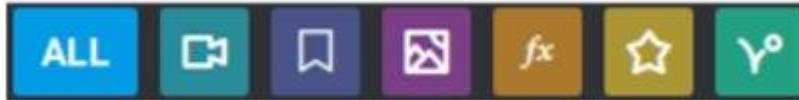
By tapping Edit you can change the name of your highlight, you can select if you want to add only replays into your playlist, only clips into your playlist, or both and you can select from a dropdown menu if you want to add the preferred camera angle or all camera angles.



3. NEW MISCELLANEOUS FEATURES OF X-ONE 1.4

3.1. MEDIA LIBRARY FILTERS

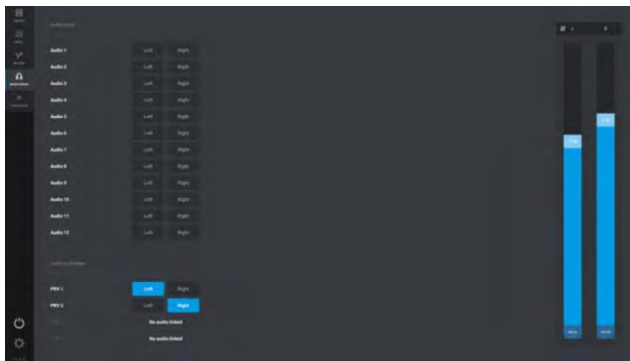
More filter options are available in the Media Library



From left to right:

- > **ALL** will show you all results available
- > **Camera Icon** will show you imported clips
- > **Clip Icon** will show you clips created in X-One
- > **Graphic Icon** will show you all graphics created by X-One
- > **Fx Icon** will show you imported transition effects
- > **Star Icon** will show you all your playlists created in X-One
- > **NDI Icon** will show you all your NDI connections with X-One

It's also possible to make a combination of filters to show you the desired results.



3.2. NEW AUDIO MONITORING

Since version 1.4 a new Audio Monitoring tab has been added in order to improve monitoring settings. In previous versions, you had to go to the audio tab to manage your preview audio monitoring.

3.3. NEW BEPLAY SHORTCUTS

New shortcuts have been added to the Remote to enable easy access to the new features added to this release.

- > **Shift + F1 – F6 keys:**
Switches cameras on the PRV channel
- > **VAR button:**
Activates the replay bar. When pressing the F1 – F6 keys it will send the replay to the PGM



4. EXTERNAL CONTROLLER

Support for MIDI controllers is now available, making it possible to create a two-operator workflow on the same X-One. The director can work exclusively on the controller while the replay operator can work with the secondary touchscreen and the Beplay Remote. The Director will send live cameras to On-Air, select replays and send them to PGM, select transitions and take clips, media or highlights to PGM. At the same time, the Replay Operator can focus on preparing and cueing replays, creating clips and highlights and preparing clips, media or highlights on PRV ready to be pushed On-Air by the director.

The supported actions for the MIDI Controller are:

- > Send a live camera to PGM or PRV
- > Send a replay to PGM or PRV
- > Select the speed of the replay
- > Take button
- > Select a cut or mix transition



5. SOFTWARE DOWNLOADS AND MANUALS

Please refer to the [Support Page of the EVS Website](#) and the Download area for manuals, release notes and software packages to download.

If you don't already have an EVS login, you'll be invited to create a personal EVS account, to help ensure that you're kept up to date with only the most relevant information and updates. This will also allow you to download all the information you need, completely free of charge.